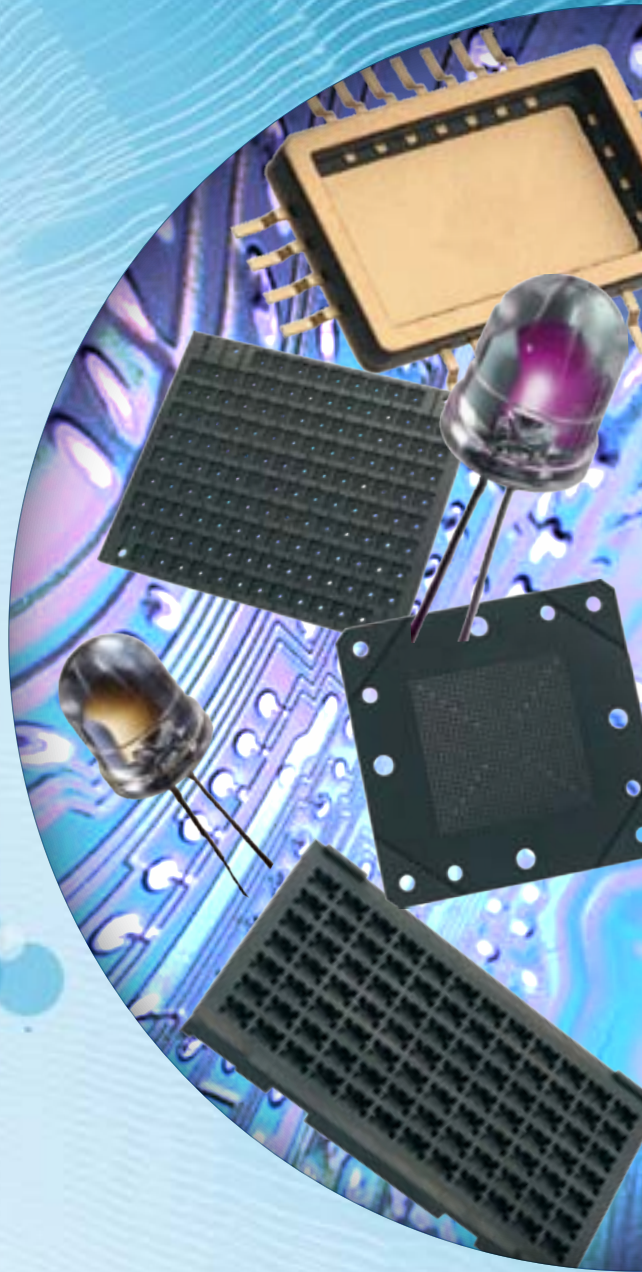


BRAZING AND SEALING JIGS AND FIXTURES

Specialty graphite materials
for brazing and glass to metal
sealing of electronic packages.



MERSEN

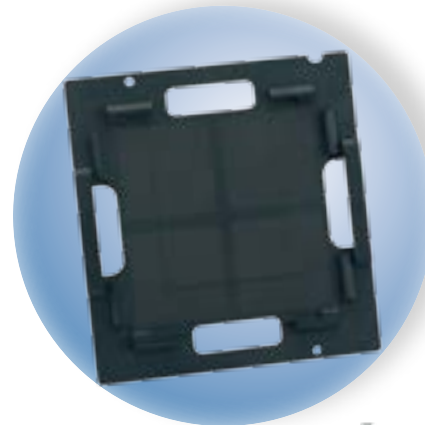
JIGS AND FIXTURES FOR BRAZING AND GLASS SEALING

Brazing and Glass to Metal sealing fixtures and jigs are used to encapsulate today's sophisticated electronic packages.

Mersen's Graphite Grades 2124, 2160 and 2175 are specially formulated to provide the ideal combination of attributes to maximize efficiency in these connection assemblies.

These critical attributes include :

- Graphite CTE matching electronic package expansion to provide tight connector tolerance requirements.
- Ability to machine intricate detail.
- Resistance to wear and oxidation resulting in extended fixture life.



Specific applications by Grade :

• GRADE 2124

Cost effective material for fixturing. Machinable to fine detail. Provides good oxidation and wear resistance extending fixture life.

• GRADE 2160

Higher density and finer-grain size provide longer fixture life.

Excellent flexural strength and high hardness resist erosion in more abrasive applications.

• GRADE 2175

Super-fine grain size and unsurpassed machinability provide ultimate performance in fine detail applications.

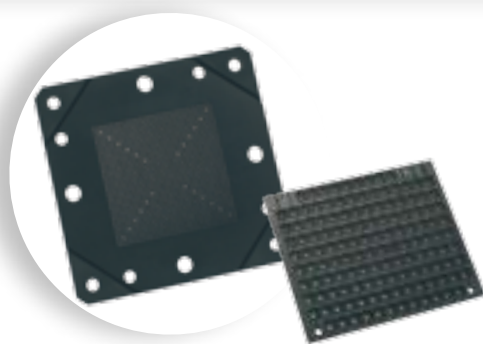
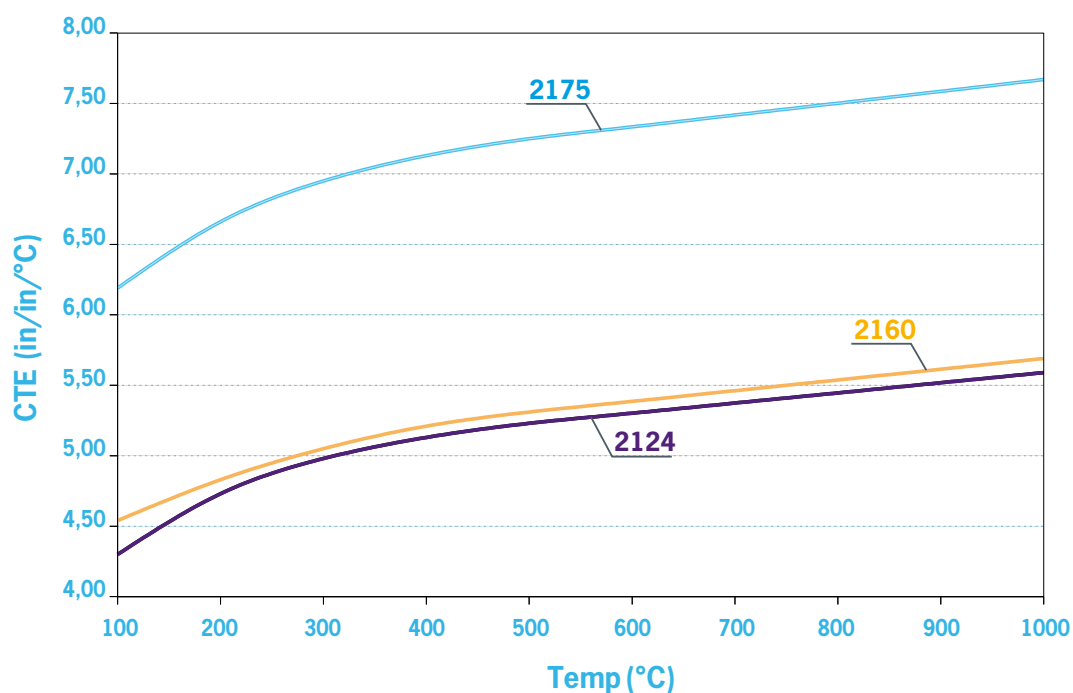
Highest graphite CTE to meet tightest dimensional applications.

Superior strength and hardness allow for even greater extended fixture life and excellent value.

Typical Physical Properties & Block Sizes

Grade	Apparent Density	Specific Resistance	Flexural Strength	Rockwell Hardness	CTE @ 1000°C	Particle Size	Standard Block Size(s)
2124	1.84 g/cm ³ 114 lbs/ft ³	1,140 μΩ.cm 0.00045 Ω.in	58 MPa 8,400 psi	80 (H) 80 (H)	5.5 x 10 ⁻⁶ /°C 3.1 x 10 ⁻⁶ /°F	13 μ 13 μ	308 x 620 x 915 mm 308 x 620 x 1,830 mm 12 x 24 x 36 in 12 x 24 x 72 in
2160	1.86 g/cm ³ 116 lbs/ft ³	1,270 μΩ.cm 0.00050 Ω.in	76 MPa 11,000 psi	95 (H) 95 (H)	5.8 x 10 ⁻⁶ /°C 3.2 x 10 ⁻⁶ /°F	5 μ 5 μ	305 x 305 x 915 mm 12.5 x 12.5 x 36 in
2175	1.88 g/cm ³ 118 lbs/ft ³	1,320 μΩ.cm 0.00052 Ω.in	86 MPa 12,500 psi	95 (H) 95 (H)	7.5 x 10 ⁻⁶ /°C 4,5 x 10 ⁻⁶ /°F	< 4μ < 4μ	305 x 305 x 100 mm 12 x 12 x 6 in

Coefficient of Thermal Expansion (CTE)



Data herein contained are provided for general information purpose only and are not binding. Mersen shall have no liability whatsoever with respect to information contained herein. Duplication, reproduction or translation of any information contained herein, in whole or in part, is strictly prohibited without prior written consent of Mersen. Our materials are in conformity with the RoHS-Directive (Restriction of the use of certain Hazardous Substances in electrical and electronic equipment). Besides Mersen guarantees the application of the European Community REACH-Regulation (Registration, Evaluation, Authorization and Restriction of Chemical substances) to all its plants located in Europe.



A WORLD EXPERT
in materials and solutions
for high temperature processes

A GLOBAL PLAYER

Global expert in materials and solutions for extreme environments as well as in the safety and reliability of electrical equipment Mersen designs innovative solutions to address its clients specific

needs to enable them to optimize their manufacturing process in sectors such as energy, transportation, electronics, chemical, pharmaceutical and process industries.

Contact in North America
MERSEN USA BN Corp.
 Bay City Branch,
 900 Harrison Street
 Bay City, MI 48708, USA
 Tel.: +1 989 894 29 11
 Fax: +1 989 895 77 40

Contact for Europe
MERSEN France Gennevilliers SAS
 41 rue Jean Jaurès - BP 148
 F-92231 GENNEVILLIERS CEDEX
 FRANCE
 Tel: + 33 (0) 1 41 85 45 55
 Fax: +33 (0) 1 41 85 43 53

Contact for Asia
MERSEN Kunshan Co. Ltd.
 #29 South Taihu Road,
 Kunshan Development Zone,
 Kunshan, Jiangsu Province,
 215334, PR CHINA
 Tel.: +86 512 5763 9808
 Fax: +86 512 5763 9811