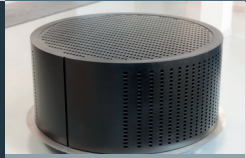


# MERSEN ANTICORROSION EQUIPMENT PORTFOLIO

## HEAT EXCHANGERS

GRAPHITE



POLYBLOC®



ANNULAR GROOVE



POLYTUBE



CUBIC

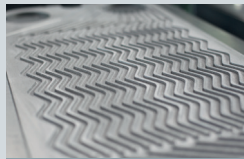


PLATE & FRAME

SILICON CARBIDE



BLOCK



SHELL & TUBE

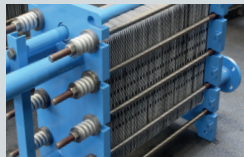
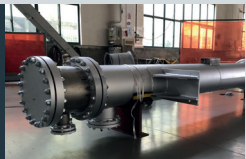


PLATE & FRAME

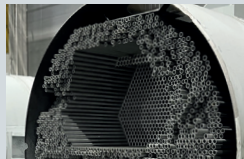
ZIRCONIUM, TITANIUM AND NICKEL ALLOYS



ZIRCONIUM



TITANIUM



NICKEL ALLOYS

## PRESSURE VESSELS, COLUMNS & BURSTING DISCS

GRAPHITE



COLUMN INTERNALS



COLUMN



BURSTING DISCS



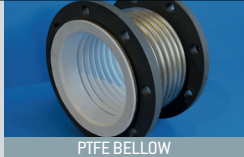
ZIRCONIUM, TITANIUM OR NICKEL ALLOYS

## PTFE PIPING & ACCESSORIES

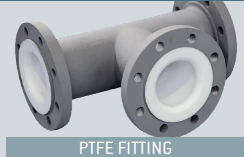
PTFE



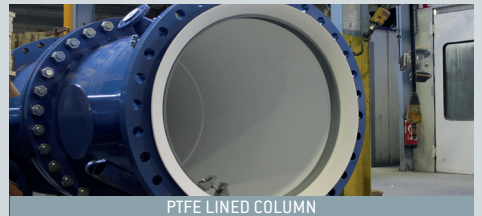
PTFE PIPING



PTFE BELLOW



PTFE FITTING



PTFE LINED COLUMN

## PROCESS TECHNOLOGIES



HCl, HBr AND H<sub>2</sub>SO<sub>4</sub> SKID-MOUNTED UNITS

## SERVICE CENTERS



REPAIR, SPARE-PARTS, PREVENTIVE MAINTENANCE...