

ZOOM

CG677

CARBON BRUSHES FOR WIND TURBINES



IMPROVED WIND GENERATOR PERFORMANCE THANKS TO LOWER RUNNING TEMPERATURES

- Increased brush and slip ring life
- Designed for high loads, up to 20 A/cm² (and higher)
- Drop-in replacement for turbines with power output upgrade packages

A UNIVERSAL / VERSATILE GRADE

- Designed specifically for wind power applications in any climatic condition on stainless steel or bronze slip rings
- Brushes field-tested successfully to last longer on all platforms even under heavy loads
- 67 % metal content for high electrical conductivity
- Silver-tamped connections, meaning improved performance during production peaks and added resistance suited to any climatic condition including extreme ones

MERSEN PROPERTY

CG677 advantages:

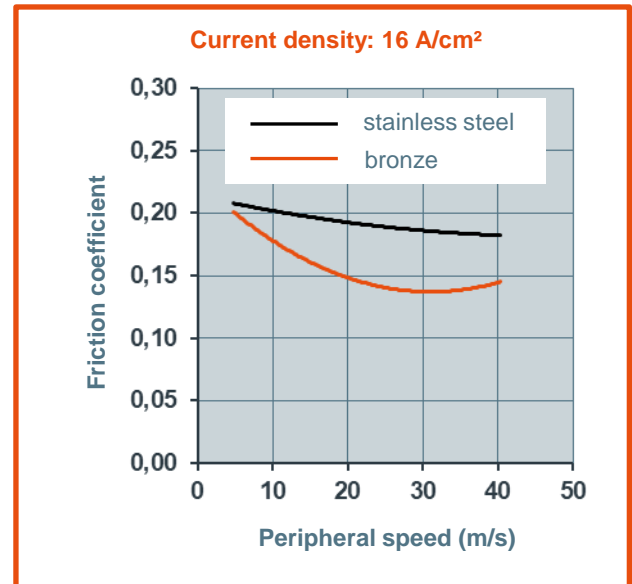
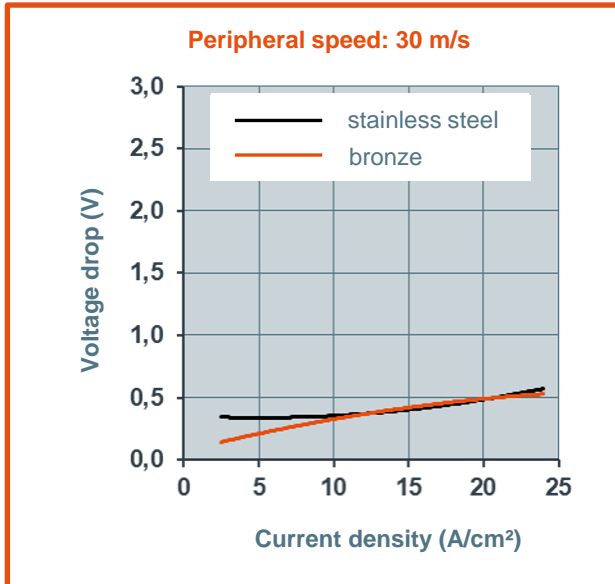
- ▶ **Low voltage drop**
 - Cool operating temperature
- ▶ **Good thermal conductivity**
 - Improved heat dissipation, which leads to lower slip ring temperatures
- ▶ **Good patina and good sliding contact**
 - Optimum performance on both stainless steel and bronze rings
- ▶ **High thermal stability**
 - No material expansion
- ▶ **Low and even brush wear**
 - Balanced current distribution in all brushes, eliminating uneven brush wear and delaying brush wear trigger

Technical characteristics:

- Relative density: 4
- Resistivity: 20 $\mu\Omega\cdot\text{cm}$ / 8 $\mu\Omega\cdot\text{in}$
- Flexural strength: 65 MPa / 9,500 PSI
- Metal content: 67 %

Recommended operating conditions*:

- Current density: 12-20 A/cm² / 75-130 A/inch²
- Linear speed: < 30 m/sec / 6,000 fpm
- Pressure on carbon brush: 18-25 kPa / 2.6-3.6 PSI



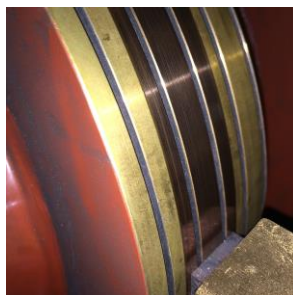
* CG677 grade has proven itself under heavy operating loads and complete spectrum of climatic conditions.

Recommended checks for optimized operation:

- adapted cooling – functional ventilation systems
- optimized groove – slip ring groove pitch
- surface conditions – slip ring roughness and run-out within specification

Further technical information @www.mersen.com. Expertise and data sheet upon request.

Good patina



Brushes wearing evenly and lasting longer



The specifications or data contained in the present document are only given for information and do not create any undertakings whatsoever. Any copy, reproduction or translation, either partially or fully, of this information is subject to the Mersen's prior written consent. In addition, due to the continuing improvement of techniques and change of applicable standards, Mersen is entitled to modify at any time the characteristics and specifications of its products as described in the present document.

Mersen products have been designed, manufactured and tested by Mersen for a range of specific industrial application to be operated depending on particular specification and climatic conditions.

BEFORE ordering, please contact Mersen. In order to ensure that the product is adequate and fits with your need you should contact/provide Mersen with all relevant technical specifications and climatic conditions. MERSEN makes no representation or/and warranty, and waives any liability, either express or implied for products' reliability and lifetime performance in case Mersen has not been provided with customers specifications or if the products are not purchased directly from MERSEN or its distributors and/or agents.



Contact: info.ptt@mersen.com

MERSEN PROPERTY