

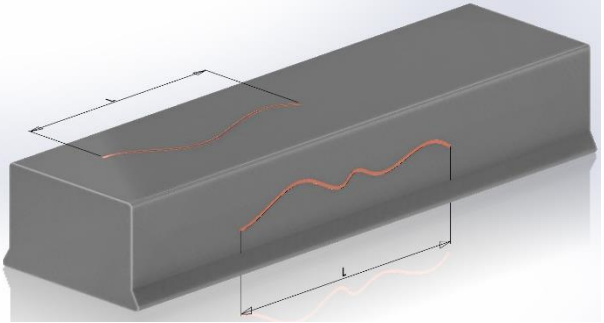
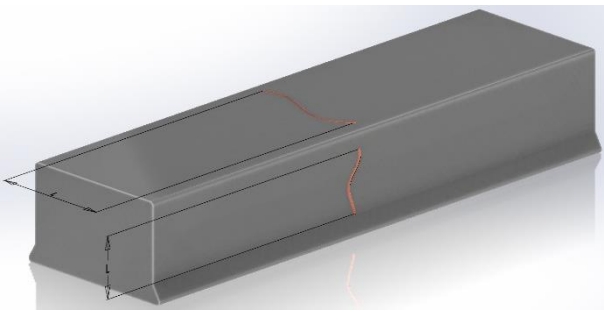
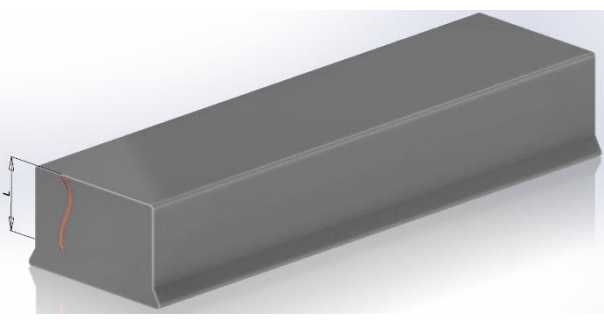
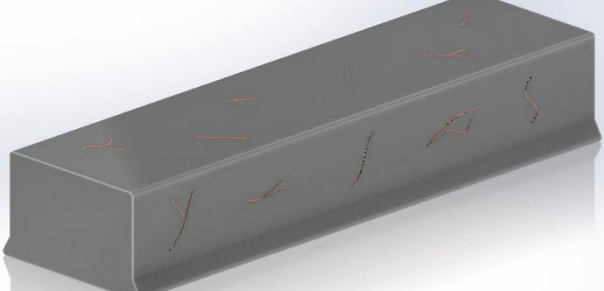
TECHNICAL DATA SHEET

VISUAL CRITERIA OF NEW CARBON STRIPS

This technical data sheet defines **the visual criteria for the acceptance of new carbon strips** whatever the grade. It is applicable for “unassembled carbon strips” (or “carbon strips alone”), contact strips and CCD shoes.

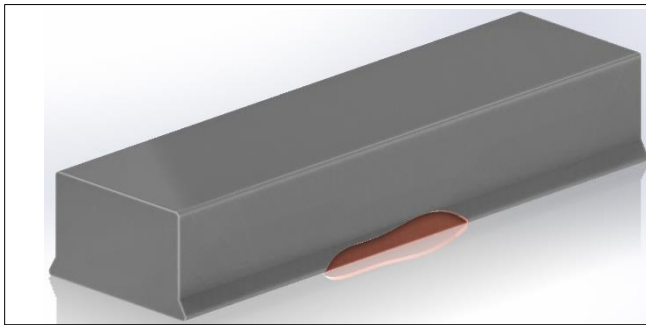
It is recommended not to use the strip if only one of the following criteria is met.

01 – CRACKS

	<p>NATURE OF THE DEFECT</p> <p>FE1 – Crack along the length on the top including the slopes or on the side</p> <p>ACCEPTANCE CRITERIA</p> <ul style="list-style-type: none"> ▪ Length \leq 50mm ▪ Thickness \leq 0,5mm ▪ No more than 1 per shoe or 3 per strip
	<p>NATURE OF THE DEFECT</p> <p>FE2 - Crack along the width on the top including the slopes or on the side</p> <p>ACCEPTANCE CRITERIA</p> <ul style="list-style-type: none"> ▪ Length \leq 20mm ▪ Thickness \leq 0,5mm ▪ No more than 2 per shoe or 5 per strip
	<p>NATURE OF THE DEFECT</p> <p>FI1 - Crack along the thickness on the extremities</p> <p>ACCEPTANCE CRITERIA</p> <ul style="list-style-type: none"> ▪ Length \leq 15mm ▪ Thickness \leq 0,5mm ▪ No more than 1 per extremity
	<p>NATURE OF THE DEFECT</p> <p>CE1 - Superficial cracking</p> <p>ACCEPTANCE CRITERIA</p> <p>Accepted</p>

MERSEN PROPERTY

02 – CHIPS

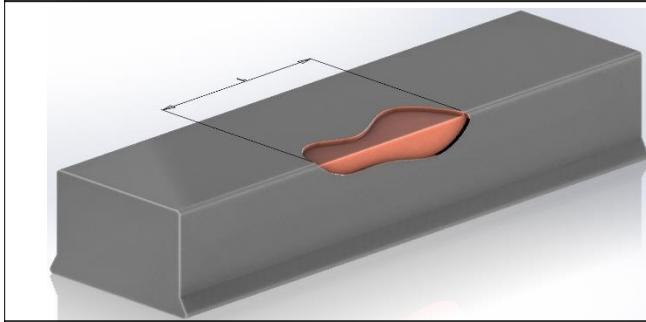


NATURE OF THE DEFECT

EE1 - Chip on the dovetail

ACCEPTANCE CRITERIA

None

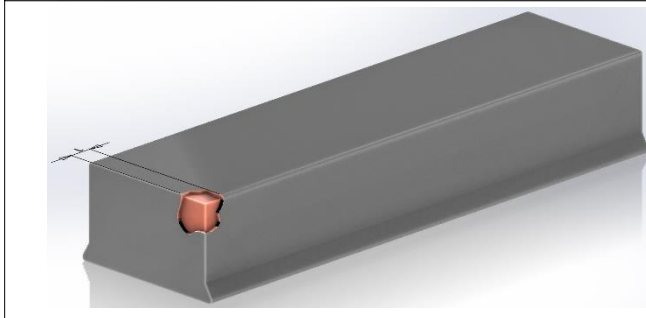


NATURE OF THE DEFECT

EE2 - Chip on the side edges

ACCEPTANCE CRITERIA

- Length ≤ 10mm
- No more than 1 per piece



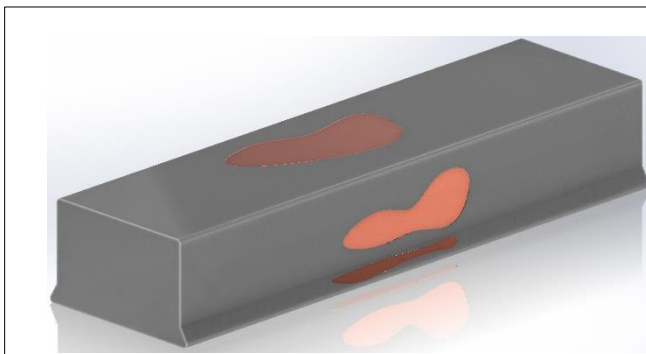
NATURE OF THE DEFECT

EE3 - Chip on the side extremities

ACCEPTANCE CRITERIA

- Length ≤ 5mm
- No more than 1 per piece

03 – OTHER

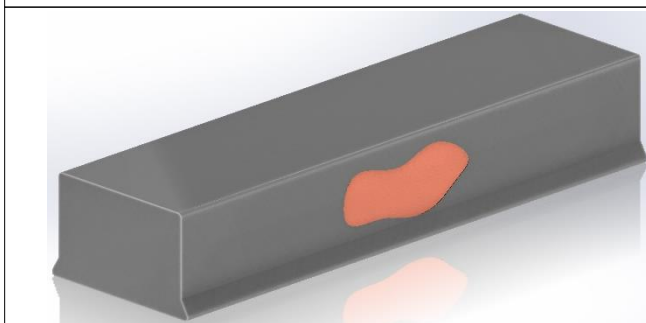


NATURE OF THE DEFECT

AE1 - Blister

ACCEPTANCE CRITERIA

- Length ≤ 5mm
- No more than 1 per piece whatever its location

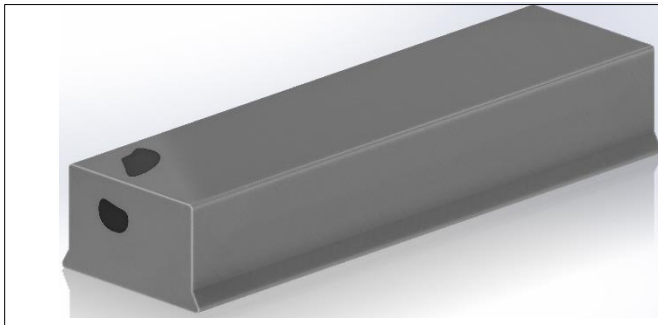


NATURE OF THE DEFECT

BE1 - Burn

ACCEPTANCE CRITERIA

None



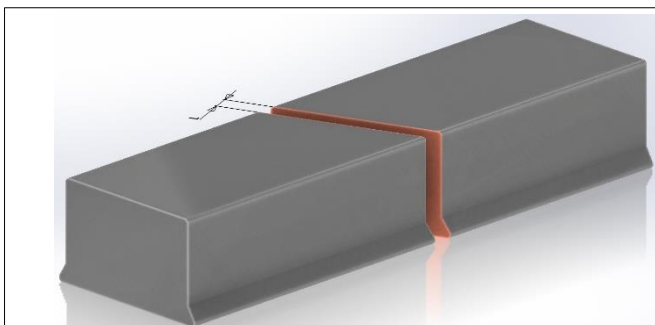
NATURE OF THE DEFECT

CI1 - Foreign body

ACCEPTANCE CRITERIA

None

In the case of carbon strips made of several segments, the following criteria apply:

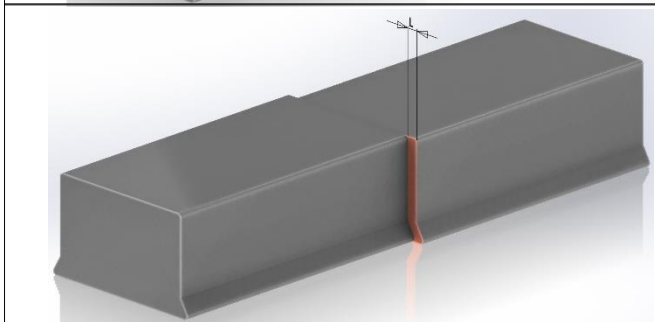


NATURE OF THE DEFECT

EC1 - Gap between two segments

ACCEPTANCE CRITERIA

- Gap ≤ 0,5mm without filling
- Gap ≤ 1mm with filling



NATURE OF THE DEFECT

EC2 - Overlap on each side

ACCEPTANCE CRITERIA

- Overlap ≤ 0,5mm without chamfer
- Overlap ≤ 0,5mm with chamfer

Specific criteria may apply depending of the application. Please contact our experts for more information.

The specifications or data contained in present document are only given for information and do not create any undertakings whatsoever. Any copy, reproduction or translation, either partially or fully, of these information is subject to the Mersen's prior written consent. In addition, due to the continuing improvement of techniques and change of applicable standards, Mersen is entitled to modify at any time the characteristics and specifications of its products as described in present catalogue. Our Customer Technical Assistance Service is at your disposal for any questions. E-mail: info.ptt@mersen.com

PTT-TDS27-EN-1812

Contact: info.ptt@mersen.com

MERSEN PROPERTY