



PROFESSIONAL CAPACITOR SOLUTIONS

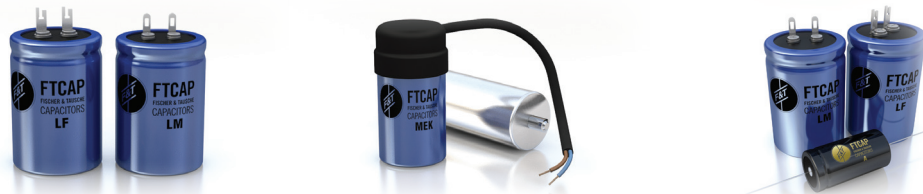
Ferraz Shawmut | Eldre | Idealec | FTCAP



ELECTROLYTIC CAPACITORS



Design	Screw terminal	Snap-in	Axial leaded
Type	G, GB, GMX, GM, GG, GW, GF	SI, SI4P, SIG, SI4G	A, AH, AG
Capacity range	390 μ F to 3.3 F	56 μ F to 330000 μ F	4.7 μ F to 82000 μ F
Voltage range	16 V to 450 V	16 V to 500 V	16 V to 500 V
Temperature range	- 55 °C to + 125 °C	- 55 °C to + 125 °C	- 55 °C to + 125 °C
Useful lifetime	2 k to 12 k hours	2 k to 5 k hours	2 k to 3 k hours
Special remarks	High temp, high ripple, self-extinguishing	Long-life, high temp, compact	Long-life, high temp
Application	Professional, industrial	Professional, industrial	Professional, industrial

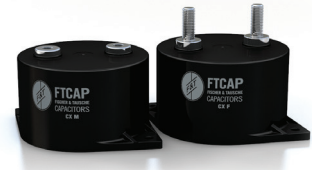


Design	Solder lug	Motorstart	Photoflash
Type	LF, LFH	MDK, MEK	Axial and radial
Capacity range	56 μ F to 330000 μ F	10 μ F to 220 μ F	12 μ F to 80000 μ F
Voltage range	16 V to 500 V	160 V to 320 V	250 V to 500 V
Temperature range	- 40 °C to + 105 °C	- 25 °C to + 60 °C	- 55 °C to + 105 °C
Useful lifetime	3 k hours		10 ⁶ flashes
Special remarks	Long-life, compact	In part with VDE	Charge / discharge proof
Application	HIFI, industrial, laser, telecommunication	Motorstart, whitegood motorcontrol	High flash frequency Photoflash, laser, hair removal

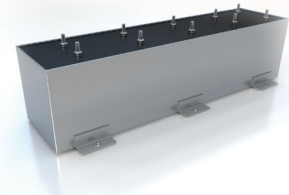


Design	Audio frequency	Central mounting	PCB solder pins
Type	ATBI, ATBIG	S, SH, SZ	GS, GSH, GSG
Capacity range	1 μ F to 200 μ F	22 μ F to 22000 μ F	56 μ F to 330000 μ F
Voltage range	35 V to 100 V	16 V to 500 V	16 V to 500 V
Temperature range	- 40 °C to + 85 °C	- 40 °C to + 105 °C	- 55 °C to + 125 °C
Useful lifetime	5 k hours	3 k hours	2k to 5 k hours
Special remarks	Bipolar with plain or raw foil	High mechanical stability, soldering lug terminals	PCB solder pins
Application	HIFI, consumer	Tube amplifier, HIFI	HIFI, inverters / drives, traction

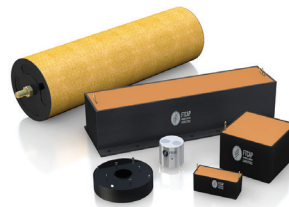
FILM CAPACITORS



Design	Radial 2 and 4 pins	Radial 4 pins	Radial threaded stud/ male-female
Type	Joule Cap	Castor Cap	Coax Cap
Capacity range	2.5 μ F to 50 μ F	4 μ F to 32 μ F	20 μ F to 400 μ F
Voltage range	500 VDC to 1500 V DC	600 VDC to 1700 V DC	600 V DC to 1900 V DC
Temperature range	- 40 °C to + 85 °C	- 40 °C to + 85 °C	- 40 °C to + 85 °C
Special remarks	Robust internal special contacts	Industry standard, PCB mount	Ultra low inductance allowing max I_{RMS} up to 100 A
Application	Inverters, Photoflash	Medium power applications	Induction heating, railway



Design	With solid connections	Different connectivity	Different connectivity
Type	Energy Cap	High voltage	Power Box
Capacity range	200 μ F to 3300 μ F	On request	2600 μ F – 22800 μ F
Voltage range	700 V DC to 1500 V DC	Up to 120 kV DC	500 V – 1800 V
Temperature range	- 40 °C to + 85 °C	- 40 °C to + 85 °C	- 40 °C to + 85 °C
Special remarks	Long-life, robust	Suitable for submersion in oil	Very high currents up to 850 A , large capacities, robust and compact
Application	DC-Link application	High voltage application	Industrial technology and railway technology



Design	Custom made film capacitors
Type	Axial, radial, pins, screw terminals — countless connectivity
Capacity range	Up to 12000 μ F
Voltage range DC	100 V DC to 40 kV DC
Voltage range AC	On request
Temperature range	- 40 °C to + 85 °C
Special remarks	Suitable for submersion in oil, for high vibration applications, bottom side cooling, application with superimposed alternating current



MERSEN IS A GLOBAL EXPERT
IN ELECTRICAL POWER AND
ADVANCED MATERIALS

NORTH AMERICA

USA
MERSEN USA
Rochester-NY, Corp.
1500 Jefferson Rd
Rochester, NY 14623 USA
T : +1 585 784 2506

capacitors.ep@mersen.com

EUROPE

GERMANY
Fischer & Tausche Capacitors
FTCAP GmbH
Carl-Benz-Straße 1
23813 Husum
Germany
T : +49 (0) 4841- 8957-0

info@ftcap.de
www.ftcap.de



EP.MERSEN.COM