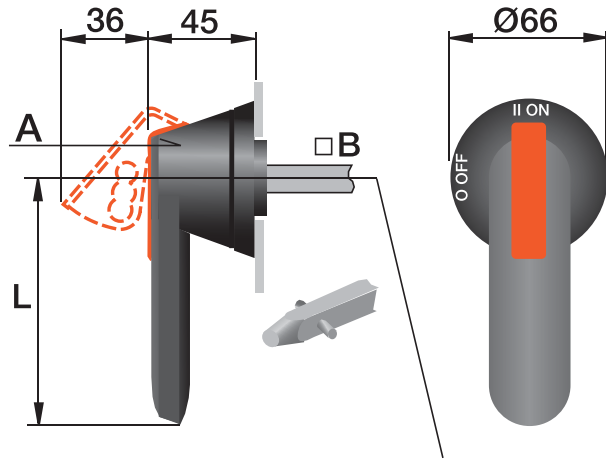


# Handles



A	L	■ Dia
HB 45	45	5
HB 45	45	6
HB 45	45	10
HB 65	65	5
HB 65	65	6
HB 65	65	8
HB 65	65	10
HB 80	80	6
HB 80	80	8
HB 80	80	10
HB 95	95	10
HB 95	95	12
HB 125	125	10
HB 125	125	12
HB 145	145	12
HB 175	175	12
HB 275	275	12

A00199A

All are NEMA type 1, 3R, 12 except "X"  
 suffix = NEMA type 4, 4X  
 B = Black R = Red G = Gray

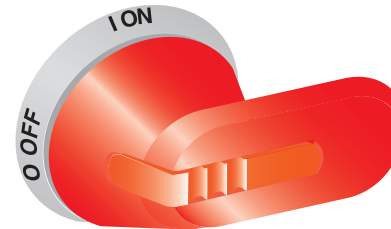
# Handles

Document no. 34H45-A

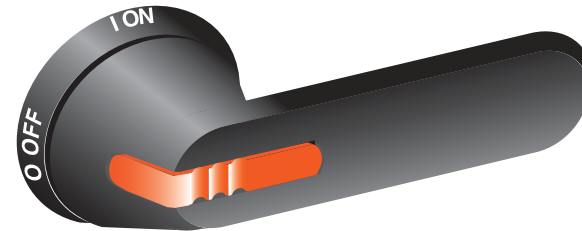
Type 1, 3R, 4, 4X or 12



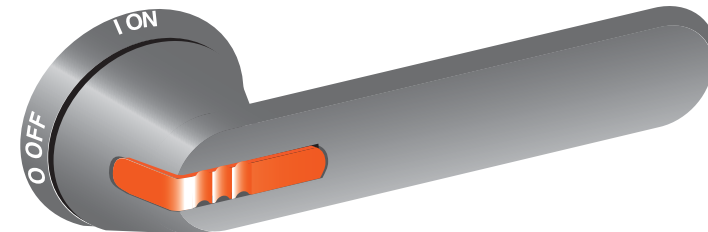
Label should be affixed to the rear mounting surface immediately adjacent the handle after installation.



HR45\_ to 275

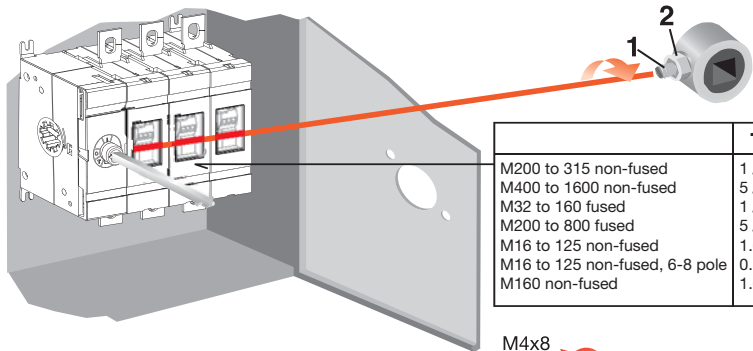


HB45\_ to 275

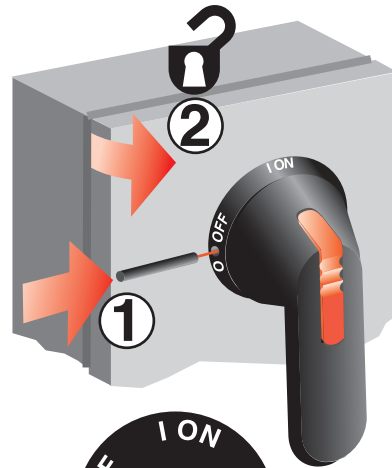


HG45\_ to 275

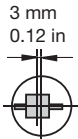
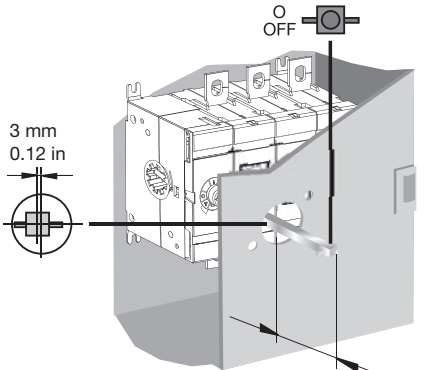
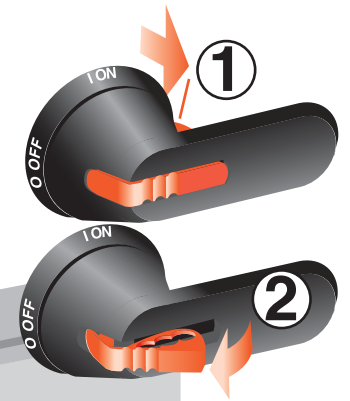
A00200A



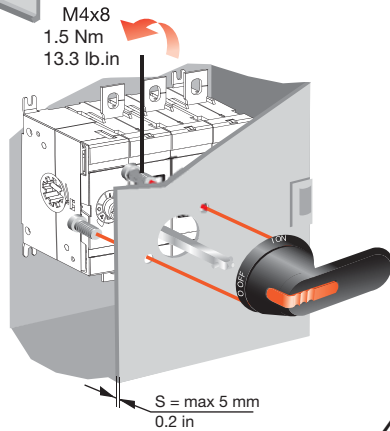
	1 Nm/lb.in	2 Nm/lb.in
M200 to 315 non-fused	1 / 8.9	1 / 8.9
M400 to 1600 non-fused	5 / 44.5	4 / 35.6
M32 to 160 fused	1 / 8.9	
M200 to 800 fused	5 / 44.5	4 / 35.6
M16 to 125 non-fused	1.6-1.8/14-16	
M16 to 125 non-fused, 6-8 pole	0.8 / 7.1	
M160 non-fused	1.6-1.8/14-16	



OH\_45...275\_



18.5 mm min / 22 mm max / 0.73 in min / 0.87 in max  
HB: 275 mm 21-24 mm / 0.83-0.94 in



M4x8  
1.5 Nm  
13.3 lb.in

S = max 5 mm  
0.2 in

45...274\_

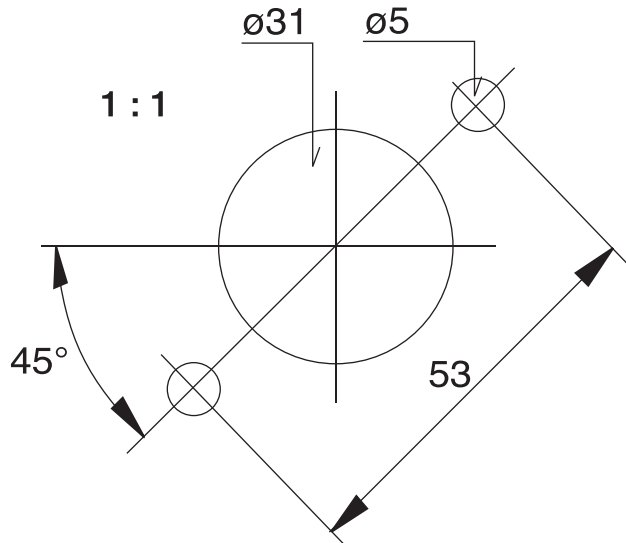
45...275\_T

45...275\_E20

45...275\_E20

45...275\_TE20

Ø5...Ø10mm



A00201A