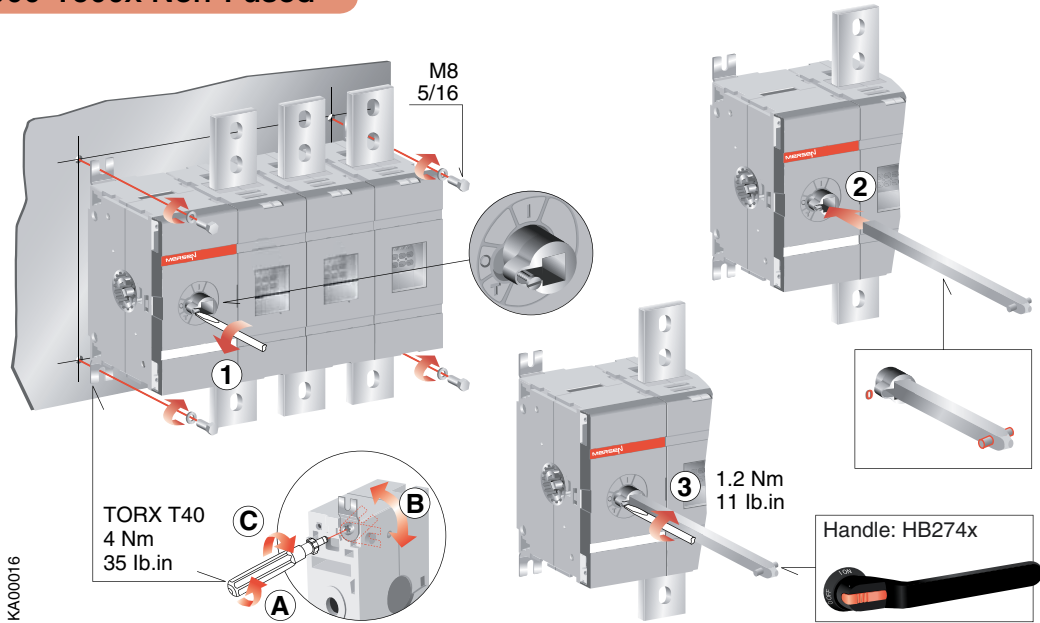


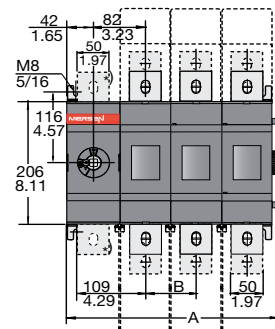
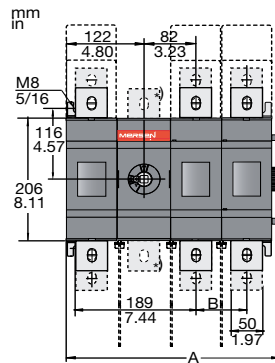
M1000-1600x Non-Fused

Document no. 34M1000-1600NF-A

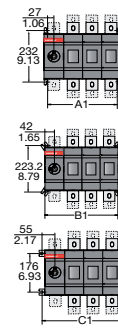
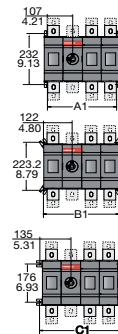
M1000-1600x Non-Fused



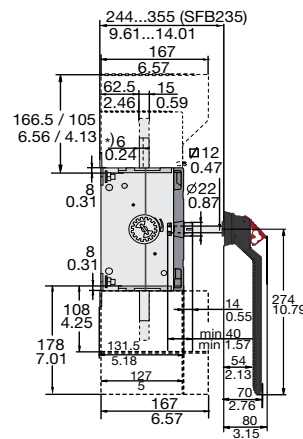
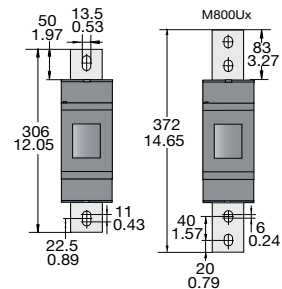
KA00016



-) N3 types



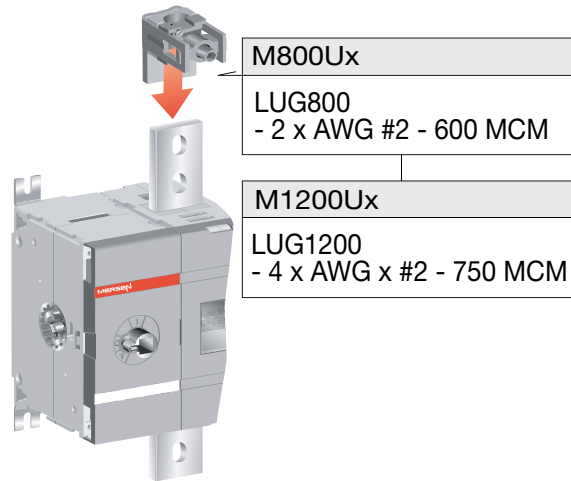
M1000-1250Ex



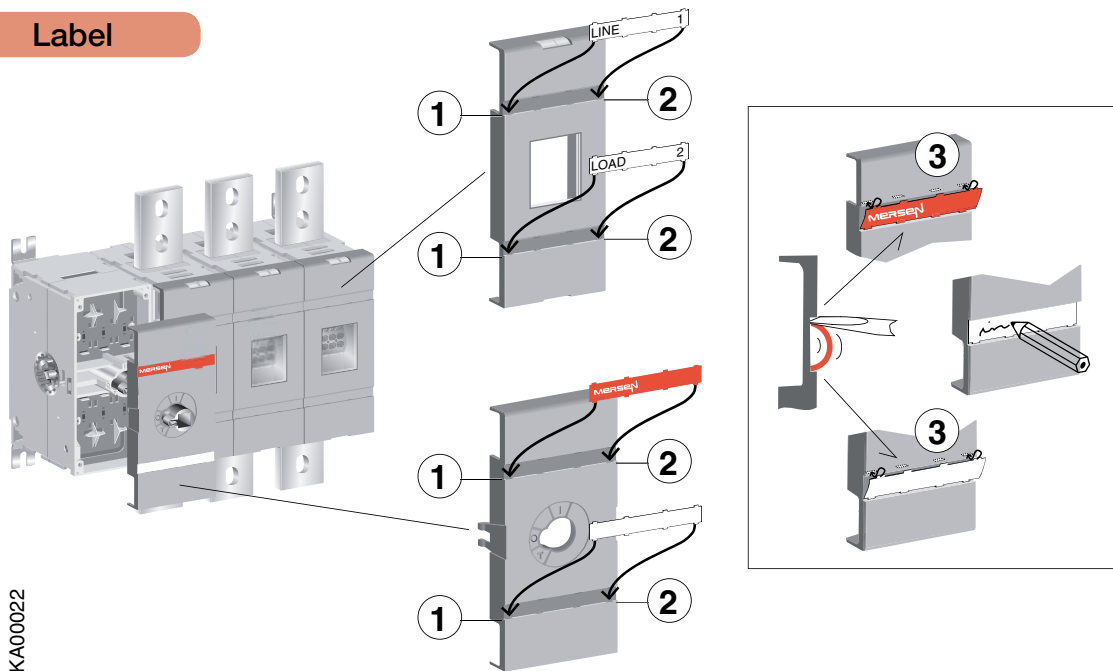
		M1000/1250/1600Ex M800U/1200U							
		01	02	03	04	11	12	13	22
A	mm	174.50	254.50	334.50	414.50	254.50	334.50	414.50	414.50
	in	6.87	10.02	13.17	16.32	10.02	13.17	16.32	16.32
B	mm		80	80	80		80	80	80
	in		3.15	3.15	3.15		3.15	3.15	3.15
A1	mm	134	214	294	374	214	294	374	374
	in	5.28	8.43	11.57	14.72	8.43	11.57	14.72	14.72
B1	mm	164	244	324	404	244	324	404	404
	in	6.46	9.61	12.76	15.91	9.61	12.76	15.91	15.91
C1	mm	190	270	350	430	270	350	430	430
	in	7.48	10.63	13.78	16.93	10.63	13.78	16.93	16.93

M1000-1600x Non-Fused

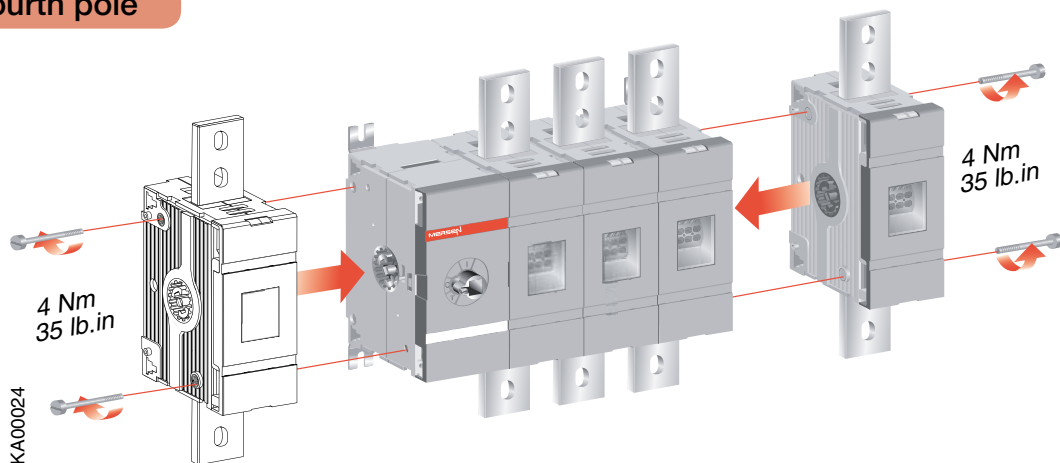
Lugs



Label



Fourth pole

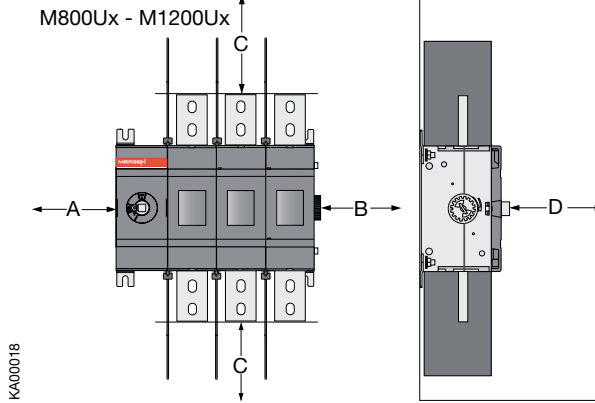


M1000-1600x Non-Fused

Clearances per UL98

Minimum enclosure size or equivalent volume

Current	800 A	1200 A
Height mm/in	1220/48	700/27.5
Width mm/in	610/24	900/35.4
Depth mm/in	305/12	400/15.7

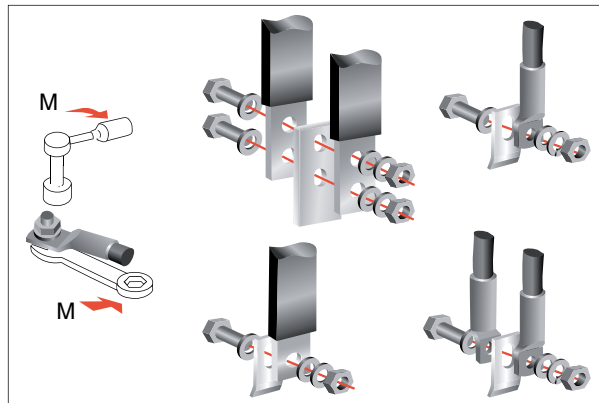
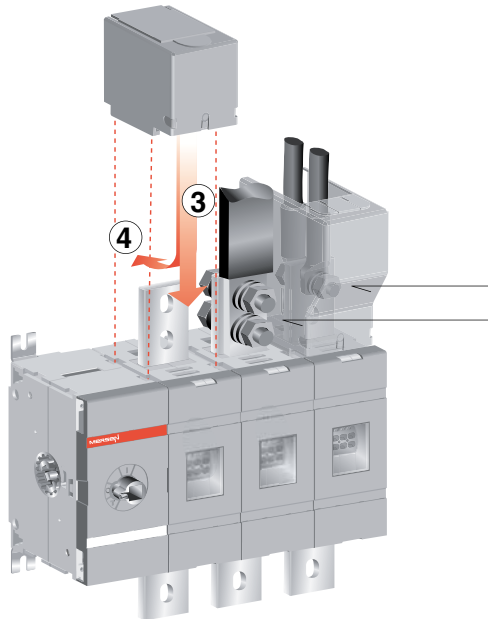
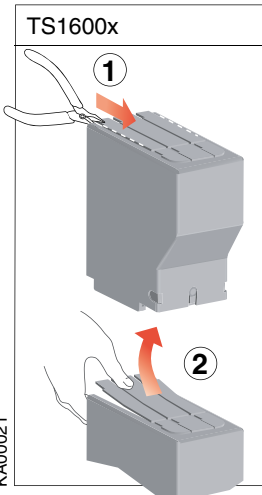
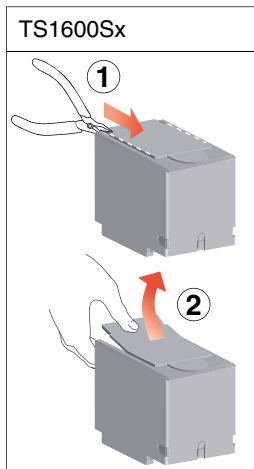


A	0
B	13 mm/0.5 in
D	36 mm/1.4 in

Cable size	
AWG	C
2	100 mm/4 in
1	100 mm/4 in
1/0	125 mm/5 in
2/0	150 mm/6 in
3/0 - 4/0	175 mm/7 in

Cable size	
MCM	C
250	200 mm/8 in
300	250 mm/10 in
350	300 mm/12 in
400	330 mm/13 in
500	356 mm/14 in
600	381 mm/15 in

Terminal shrouds



M12

50...75 Nm

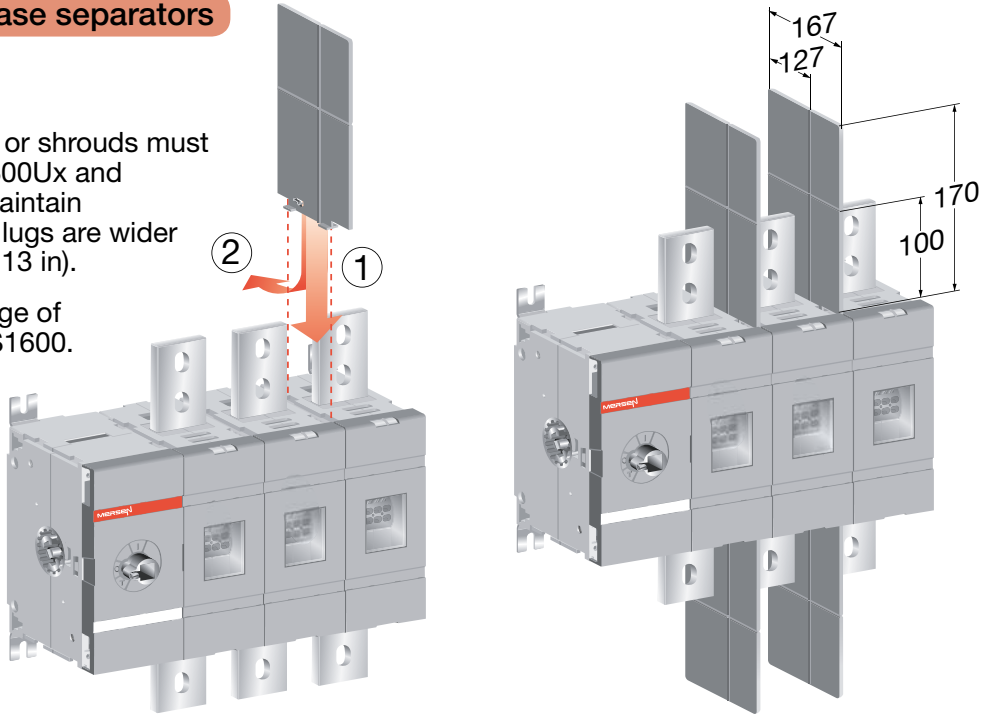
443-664 lb.in

M1000-1600x Non-Fused

Barriers/Phase separators

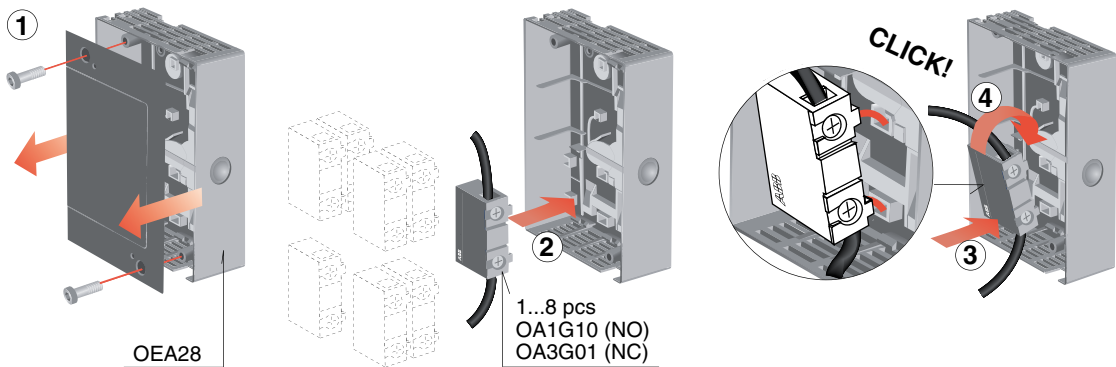
Barriers 68912 or shrouds must be used on M800Ux and M1200Ux to maintain 1" clearance, if lugs are wider than 54 mm (2.13 in).

Type for package of 6 barriers is PS1600.



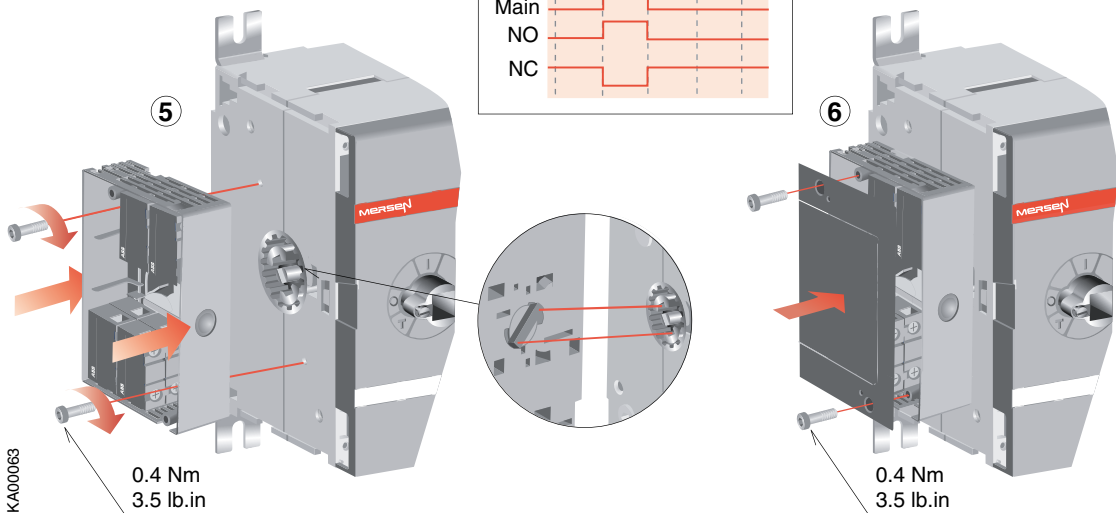
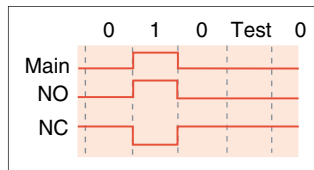
KA00020

Externally mounted Auxiliary contacts



OEA28

1...8 pcs
OA1G10 (NO)
OA3G01 (NC)



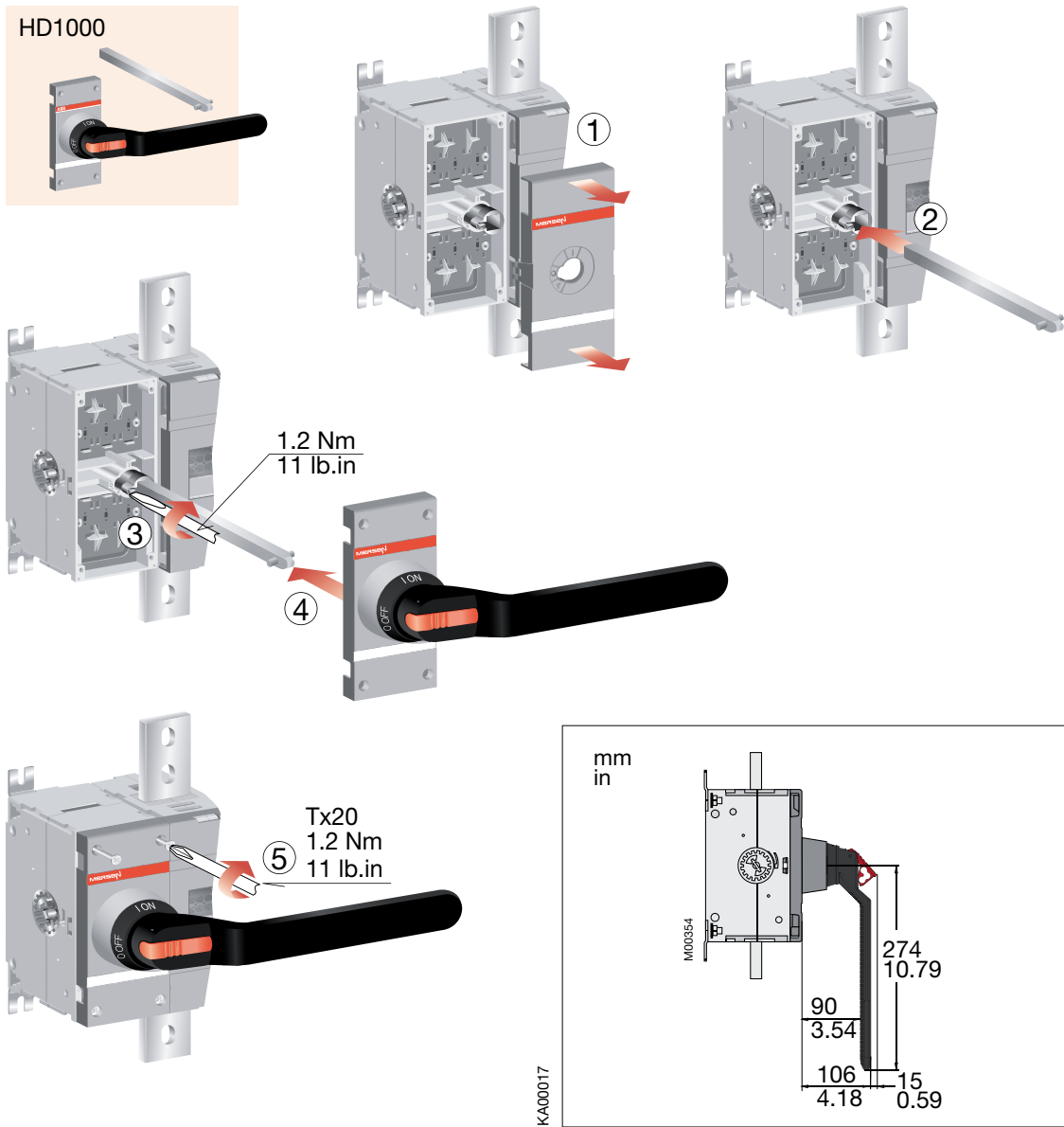
KA00063

0.4 Nm
3.5 lb.in

0.4 Nm
3.5 lb.in

M1000-1600x Non-Fused

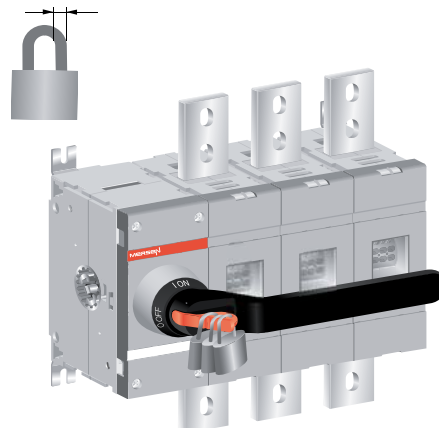
Handle direct



Note: Use protection against direct contact. For example:

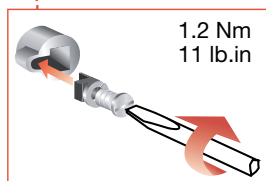
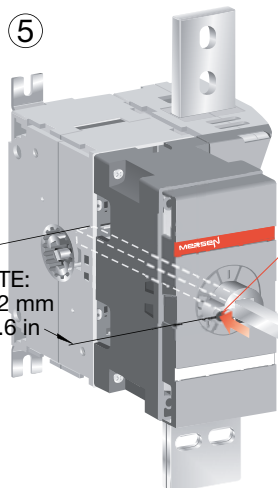
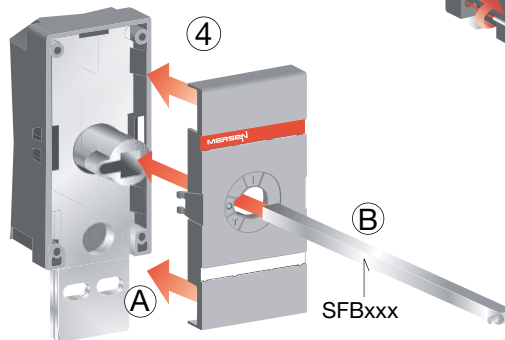
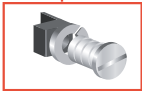
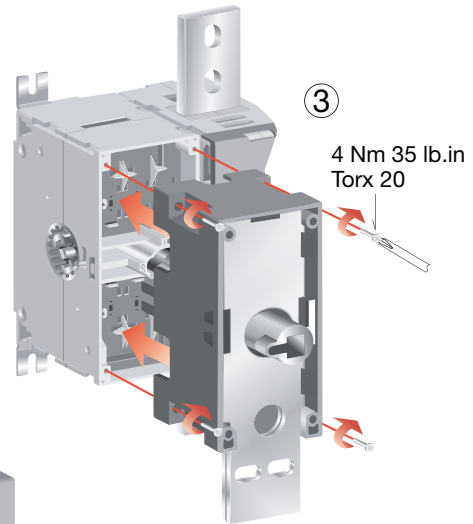
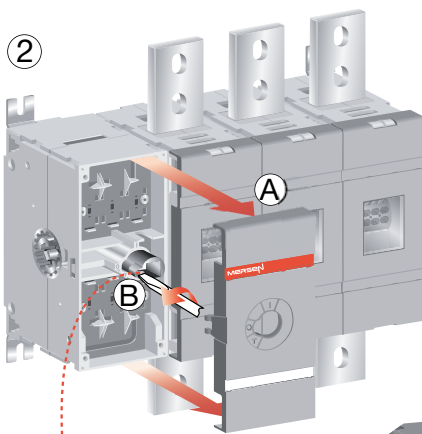
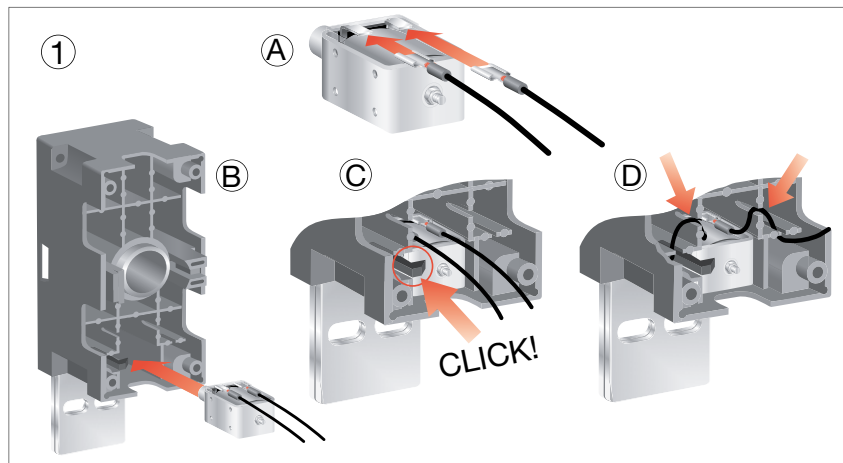
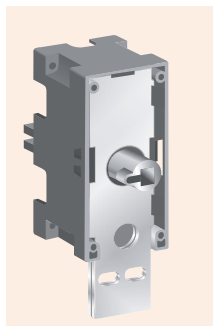


Ø5...Ø10 mm



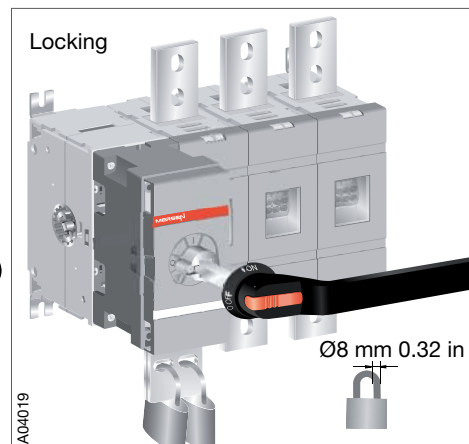
M1000-1600x Non-Fused

LON1600S LOFF1600S Locking mechanism



Handle: HB274x

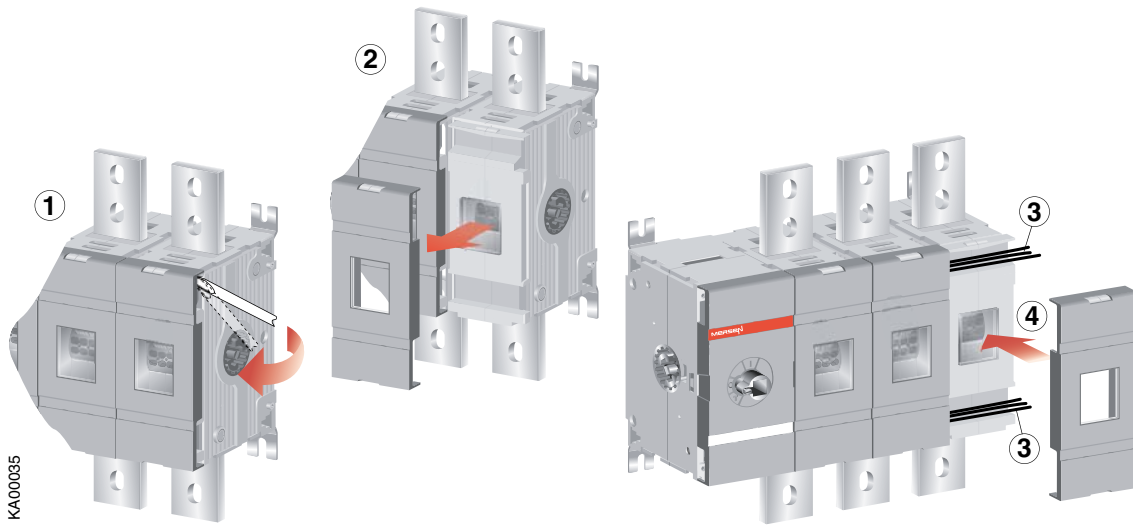
△ NOTE:
min. 92 mm
3.6 in



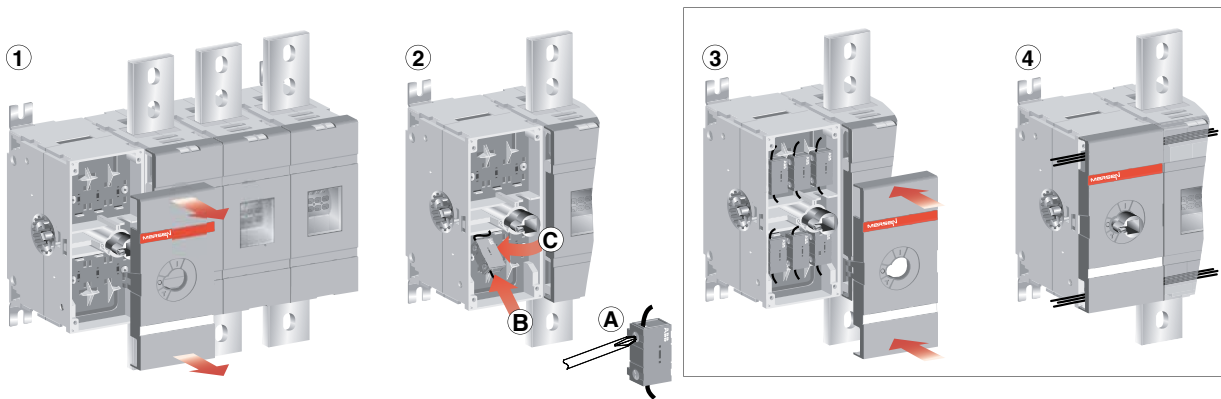
A04019

M1000-1600x Non-Fused

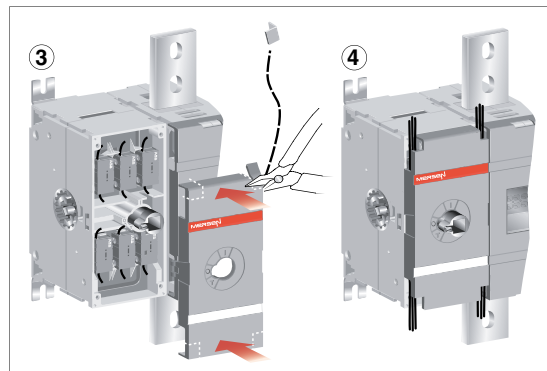
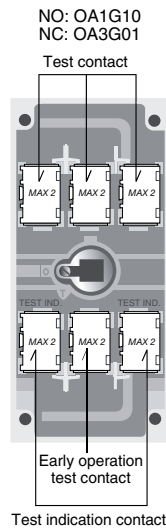
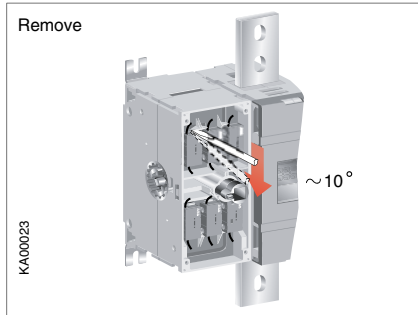
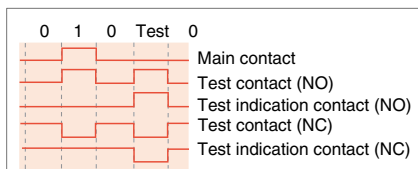
Control wiring



Internally mounted Auxiliary contacts



or



M1000-1600x Non-Fused

4Px1600 Neutral Pole

