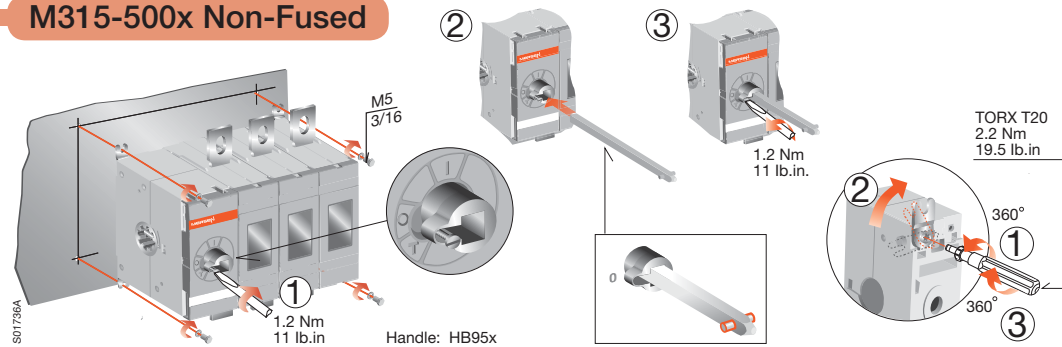
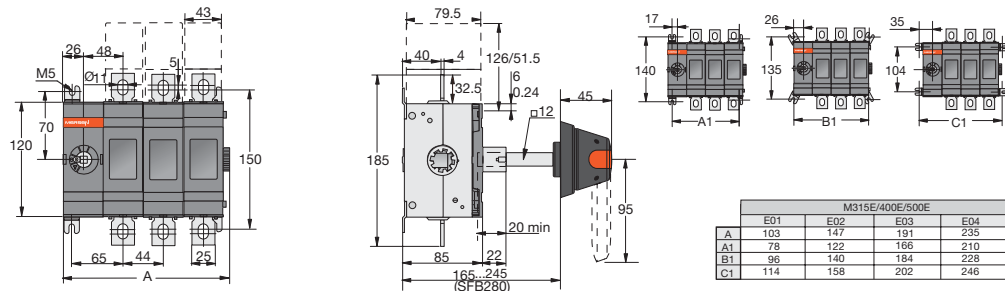


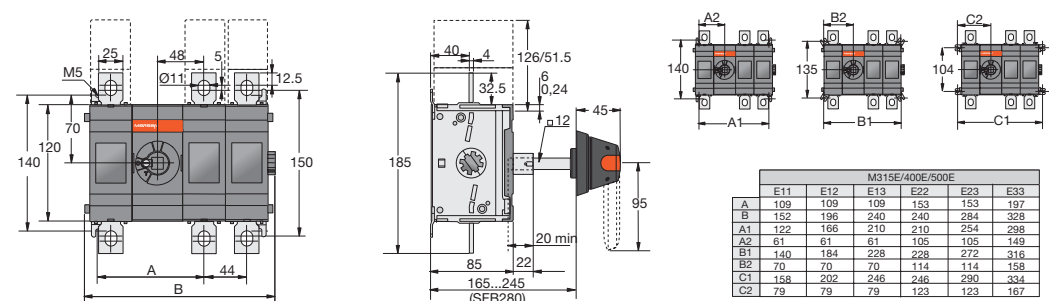
M315-500x Non-Fused



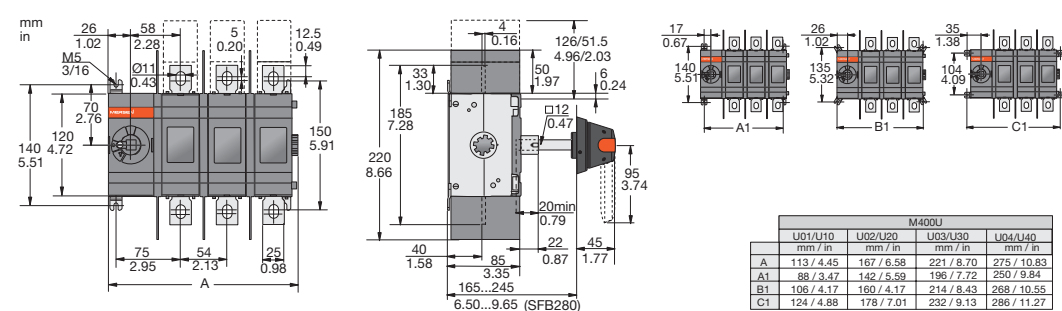
M315E - 500E, 03 or 30 configuration



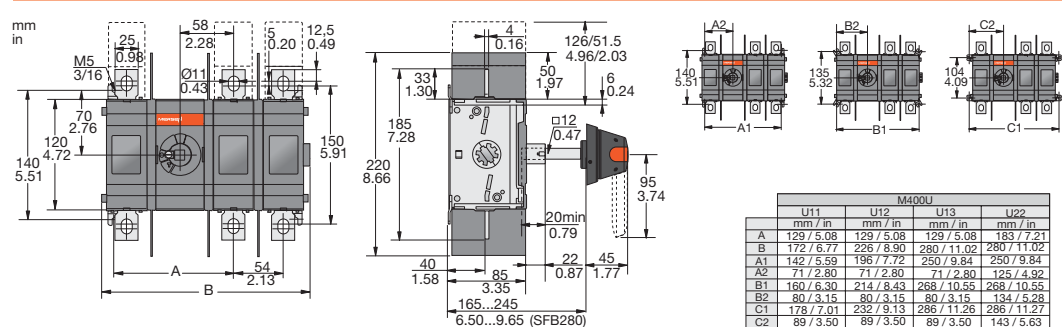
M315E - 500E 11 to 22 configurations



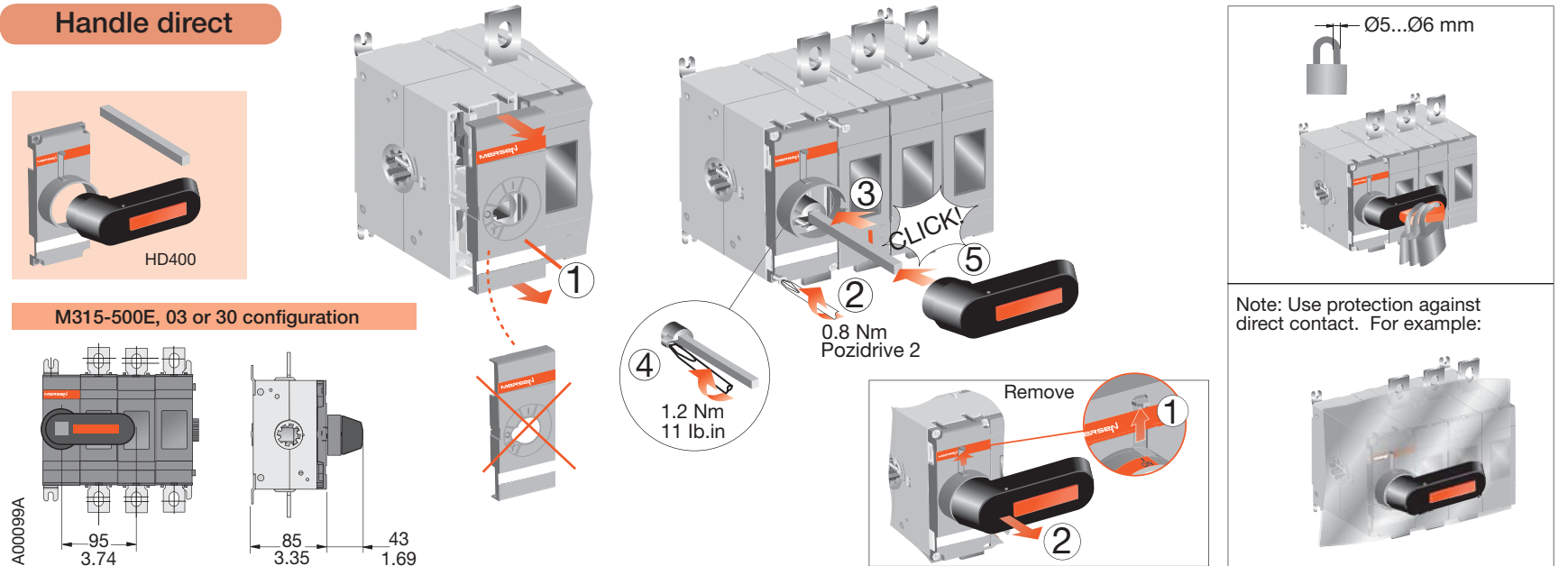
M400U, 03 or 30 configuration



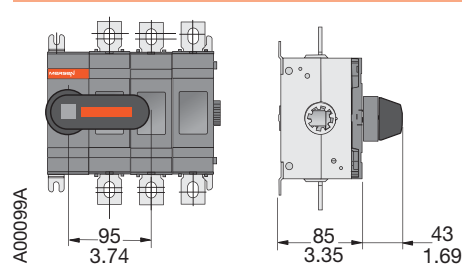
M400U, 11 to 22 configuration



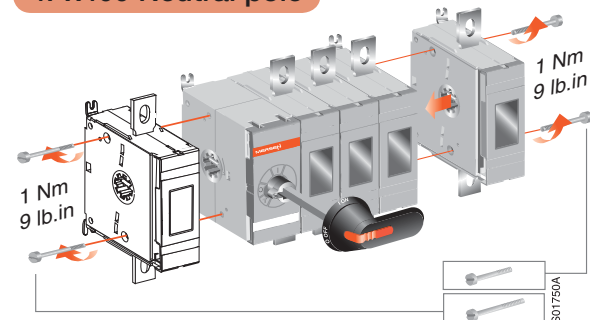
Handle direct



M315-500E, 03 or 30 configuration



4Px400 Neutral pole



Clearances per UL98

Height mm/in	600/23.6
Width mm/in	350/13.8
Depth mm/in	200/7.9

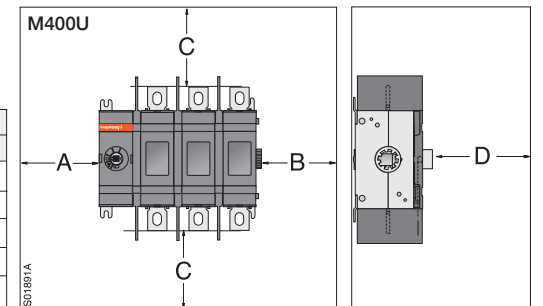
Minimum enclosure size or equivalent volume

A	0
B	13 mm 0.5 in
D	13 mm 0.5 in

Cable size

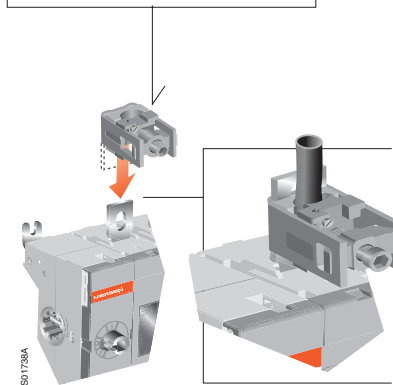
MCM	C
250	250 mm/8 in
300	250 mm/10 in
350	300 mm/12 in

AWG	C
2	100 mm/4 in
1	100 mm/4 in
1/0	125 mm/5 in
2/0	150 mm/6 in
3/0-4/0	175 mm/7 in



Lugs

M400U
LUG400 - AWG #2 - 600 MCM
LUG406 - 6 x AWG #14 - #6



Terminal shrouds

