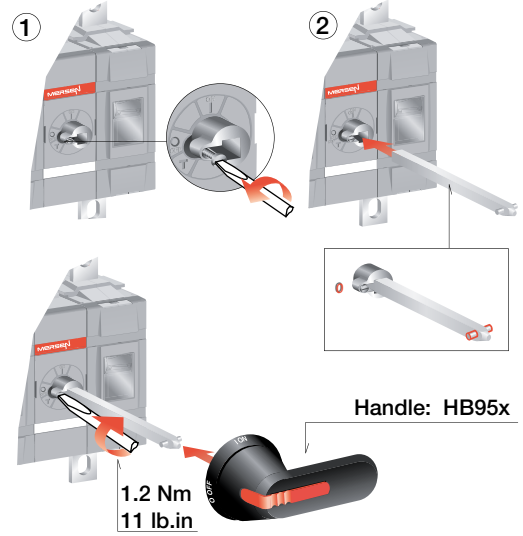
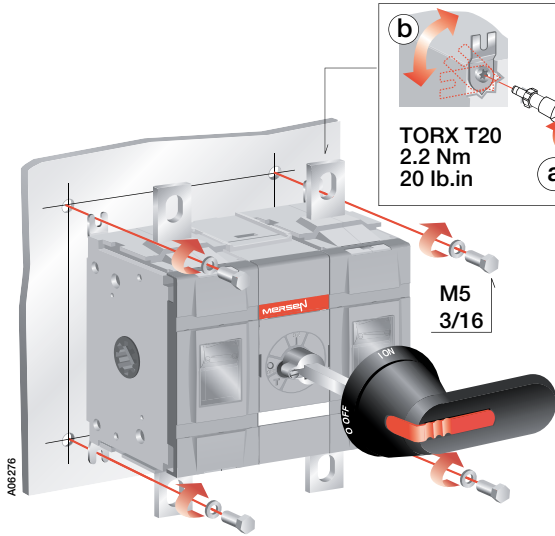


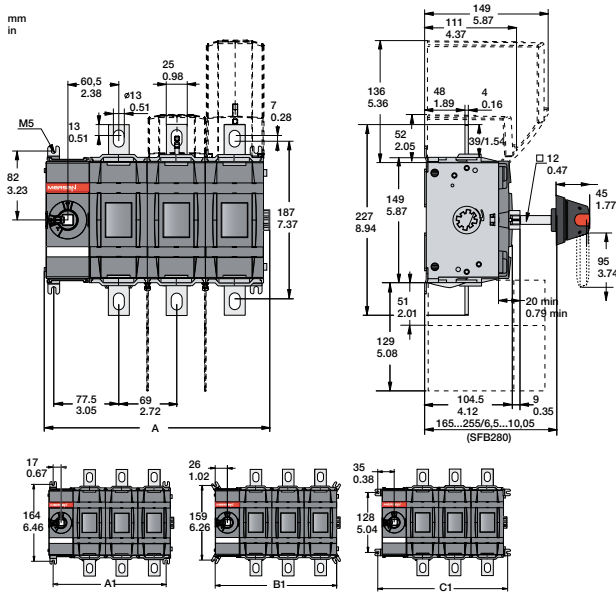
MD315-500E & MD250-400U

Document no. 34MD250-500NF-A

MD315-500E & MD250-400U



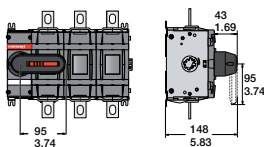
MD315-500E & MD250-400U, 03 or 30 configuration



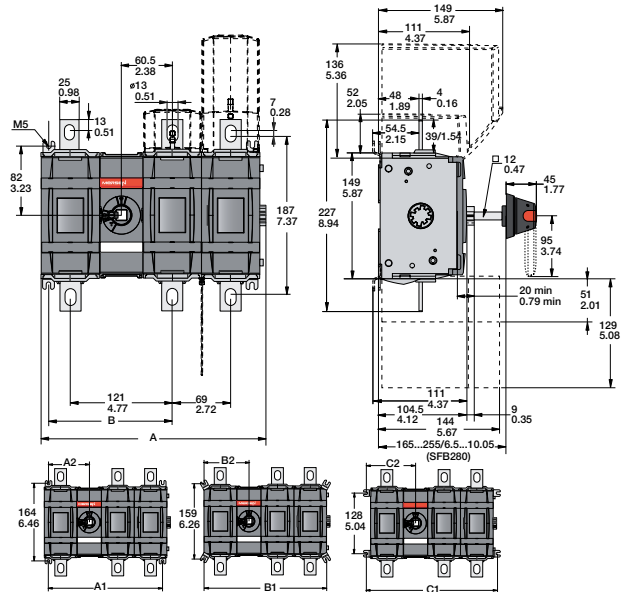
MD315-500E & MD250-400U
03 or 30 configuration

[mm/in]	01	02	03	04
A	130/5.12	199/7.84	268/10.56	337/13.28
A1	102/4.02	171/6.74	241/9.49	310/12.21
B1	121/4.77	190/7.48	259/9.6	328/12.92
C1	139/5.48	208/8.19	277/10.91	346/13.63

With handle



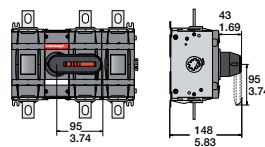
MD315-500E & MD250-400U, 11 or 22 configuration



MD315-500E & MD250-400U
11 or 22 configuration

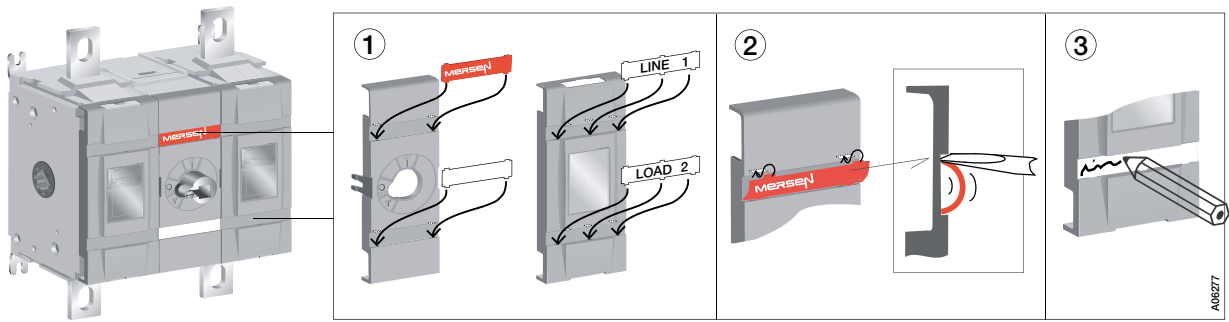
[mm/in]	11	12	13	22
A	197/7.76	266/10.48	335/13.2	335/13.2
B	146.5/5.77	146.5/5.77	146.5/5.77	215.5/8.49
A1	172/6.77	241/5.55	310/12.21	310/12.21
A2	86/3.39	86/3.39	86/3.39	155/6.11
B1	190/7.48	259/10.2	328/12.92	328/12.92
B2	95/3.74	95/3.74	95/3.74	164/6.46
C1	208/8.19	277/10.91	346/13.63	346/13.63
C2	104/4.1	104/4.1	104/4.1	173/6.81

With handle



MD315-500E & MD250-400U

Label



Lugs

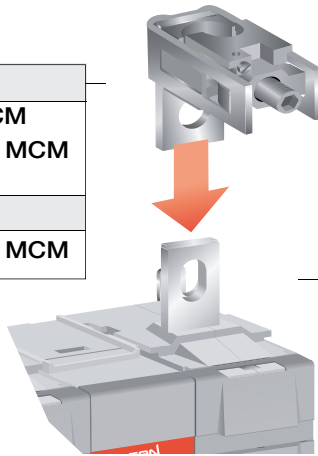
MD250Ux

LUG400 - AWG #2 - 600 MCM

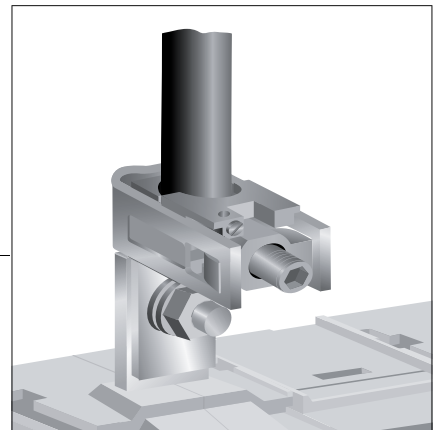
LUG800 - AWG 2 x #2 - 600 MCM

MD320Ux, 400Ux

LUG800 - AWG 2 x #2 - 600 MCM



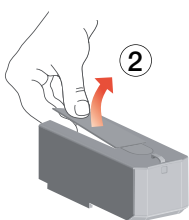
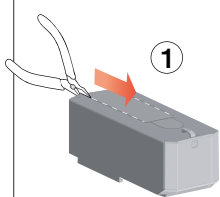
Note:
Always use counter torque
when tightening terminals!



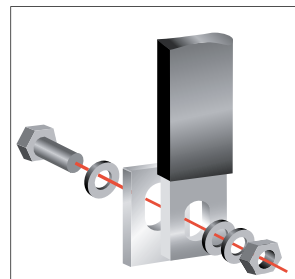
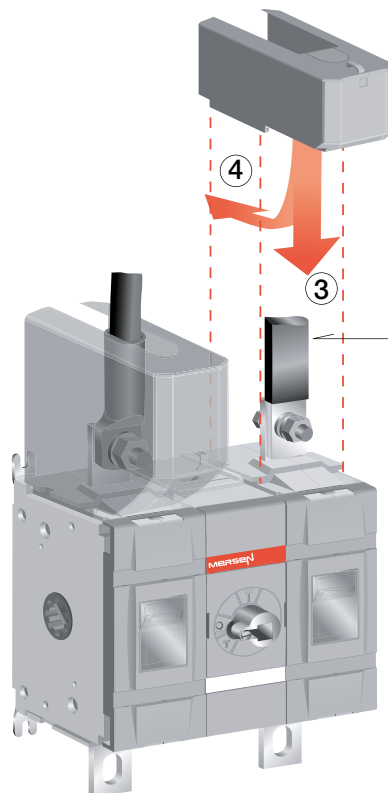
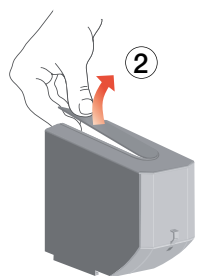
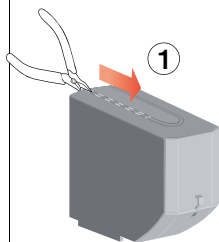
Terminal shrouds

TDS400Sx

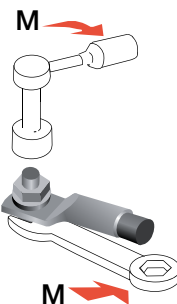
TDS400x



A06279



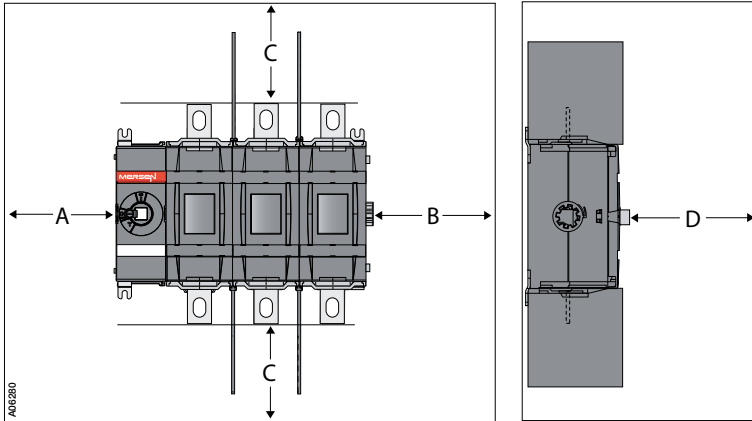
M10 30...44 Nm 266-390 lb.in
M12 50...75 Nm 443-664 lb.in



MD315-500E & MD250-400U

Clearances per UL98

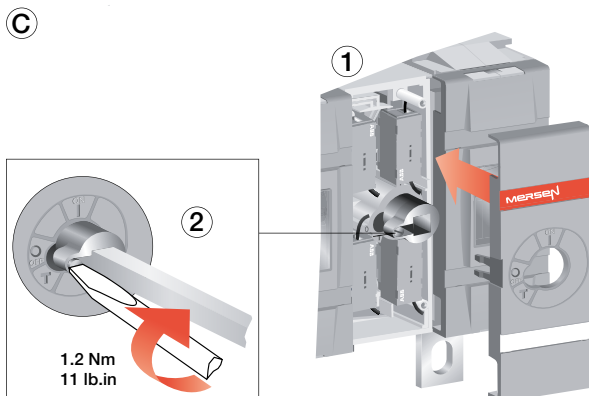
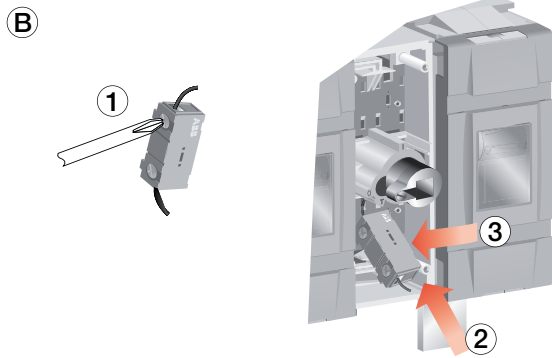
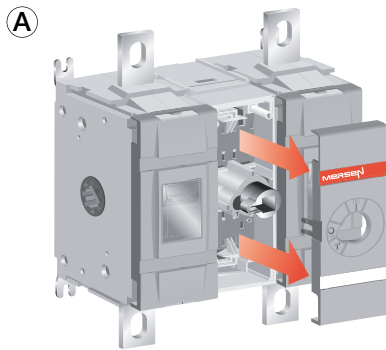
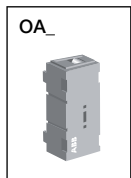
Minimum distances to enclosure walls



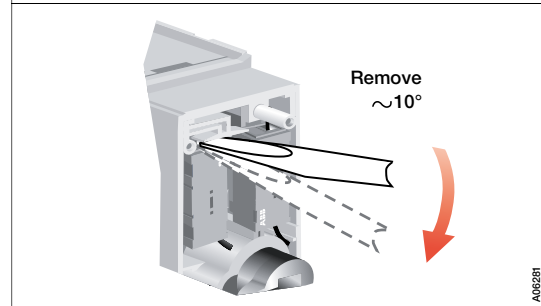
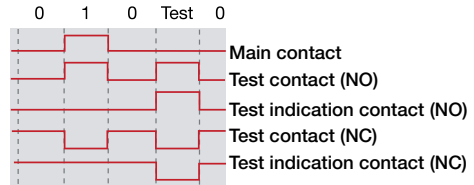
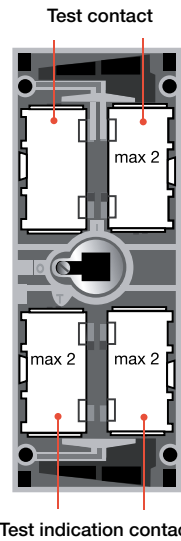
Minimum enclosure size or equivalent volume

Height	Width	Depth
600 mm/24 in	700 mm/19 in	200 mm/8 in
A	B	D
0 mm/0 in	26 mm/1 in	64 mm/2.5 in
C Cable size		
AWG		
1	100 mm 4 in	
2/0	150 mm 6 in	
3/0	175 mm 7 in	
4/0	175 mm 7 in	
MCM		
250	200 mm 8 in	
300	250 mm 10 in	
400	330 mm 13 in	
600	381 mm 15 in	

Internally-mounted Auxiliary contacts



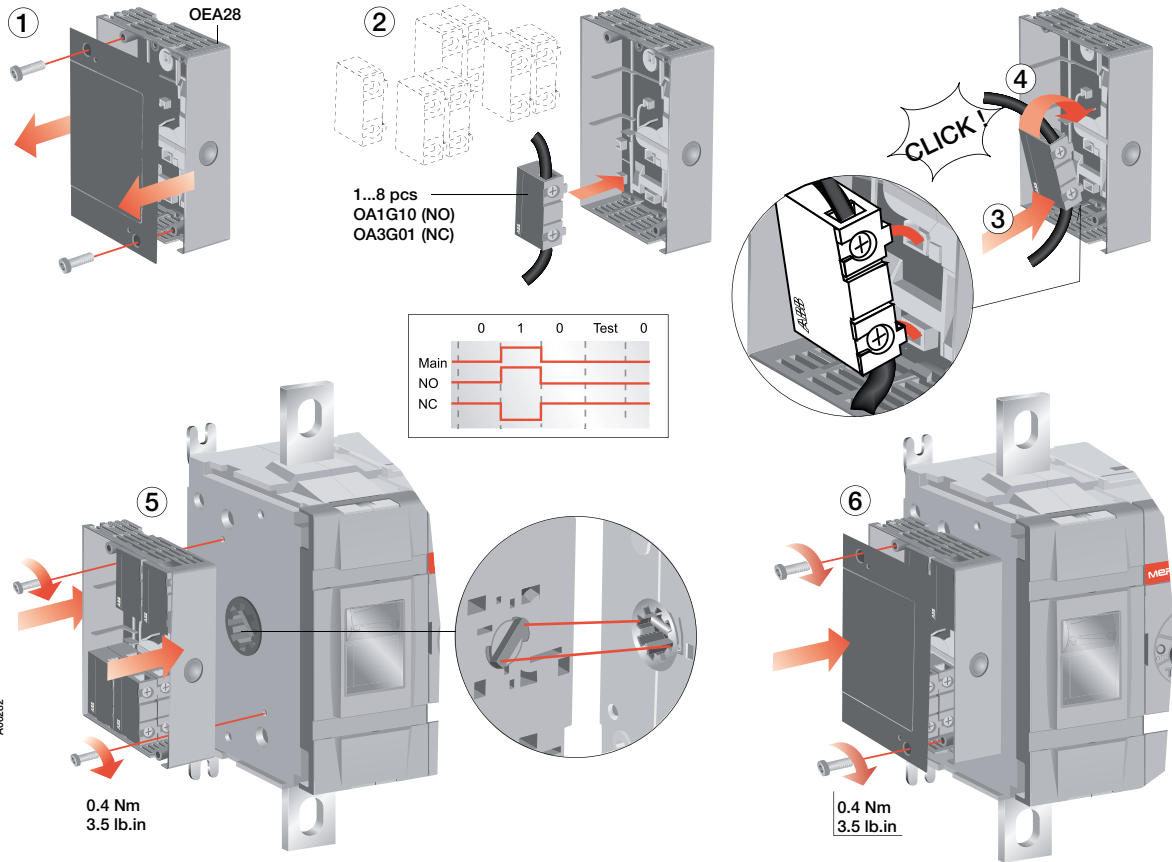
NO: OA1G10
NC: OA3G01



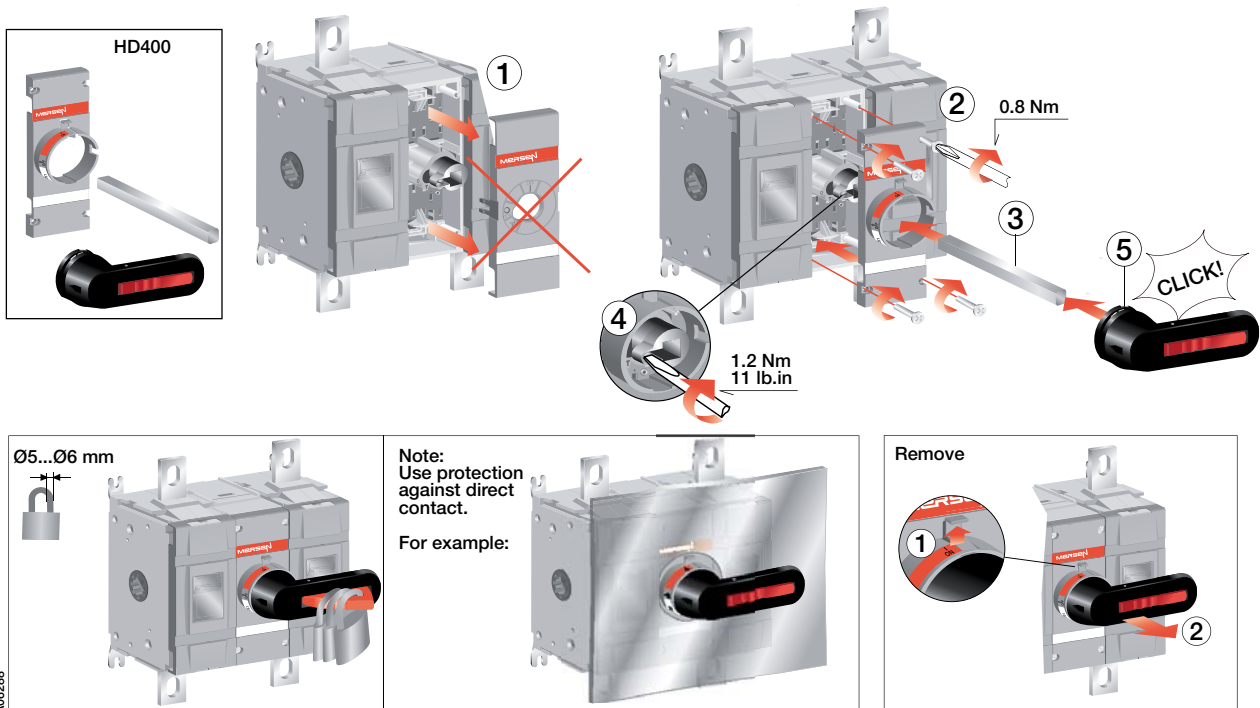
A06281

MD315-500E & MD250-400U

Externally-mounted auxiliary contacts

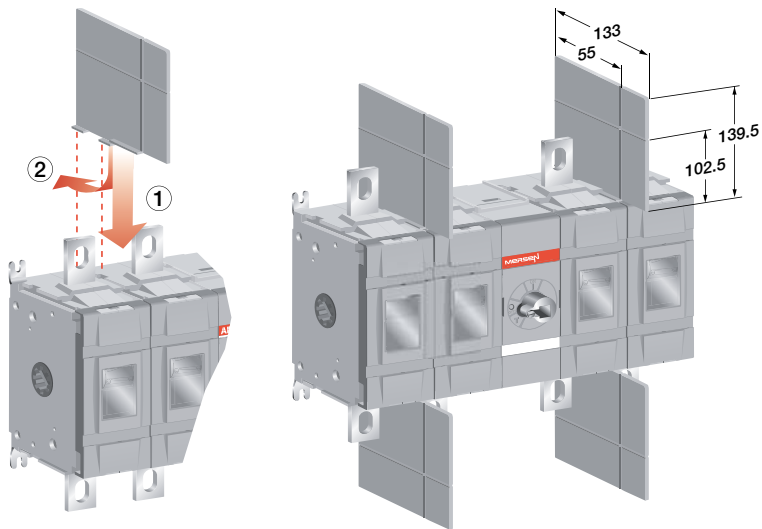


Handle direct



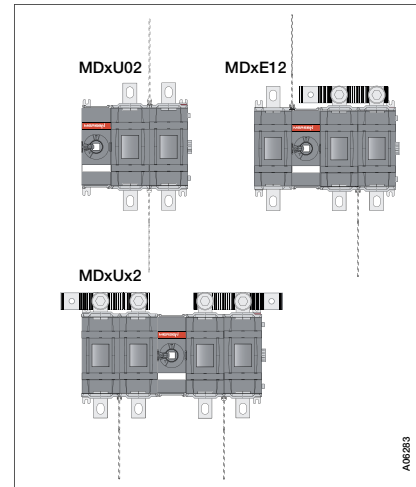
MD315-500E & MD250-400U

Phase separators, barriers



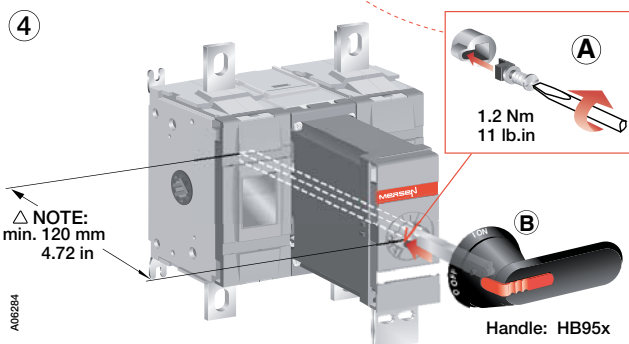
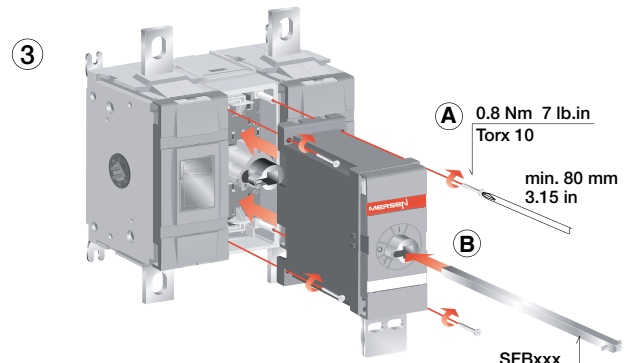
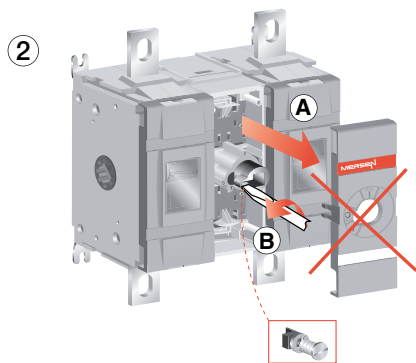
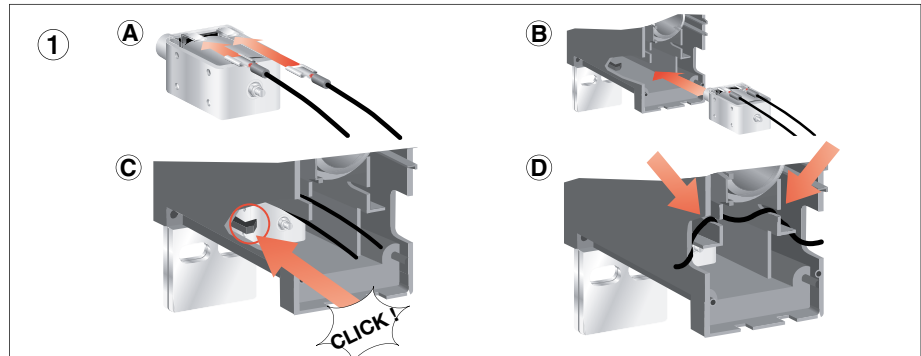
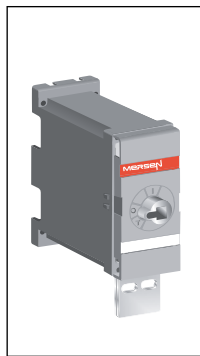
Barriers 69539 or shrouds must be used between poles on types MD250-400U and MD315-500E.

Type for package of 2 barriers is PSD400.

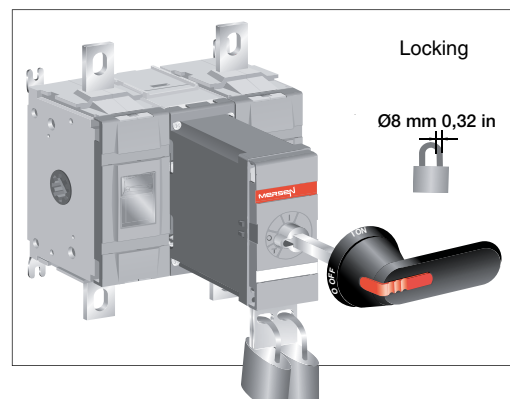


AUG2013

LON400S LOFF400S Locking mechanism



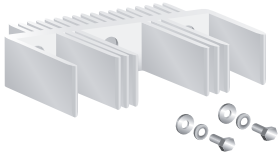
AUG2014



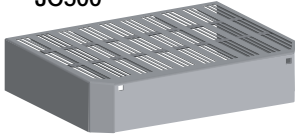
MD315-500E & MD250-400U

Jumper bar and Jumper cover

JUMP500

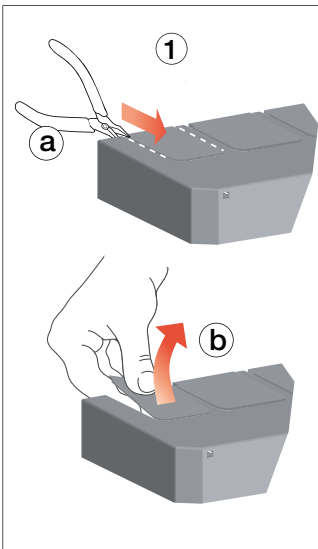
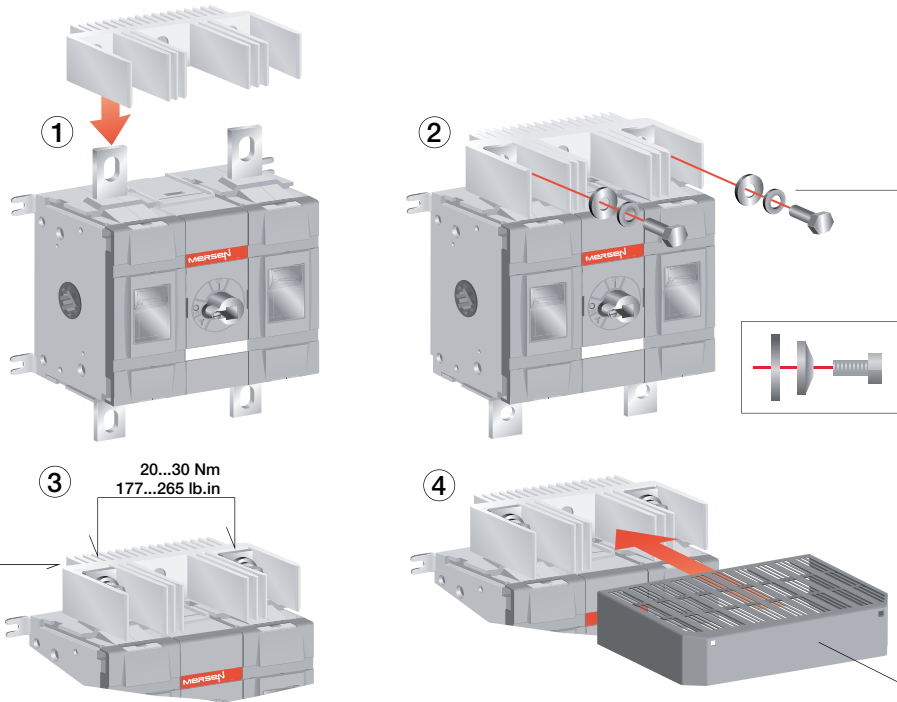
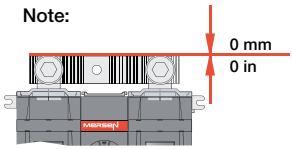


JC500

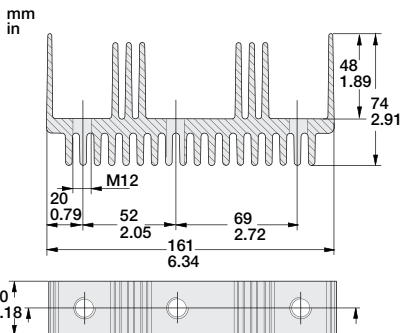
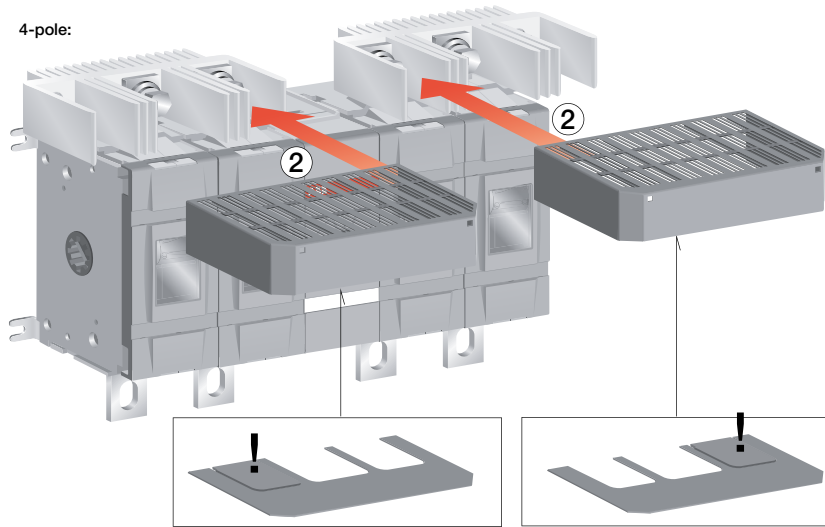


Note:
MD400U22 with JC500 alternative
mounting bracket OEZKL10/4
must be used.

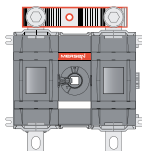
Note:



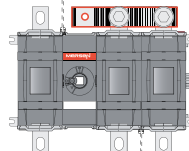
4-pole:



2-pole:

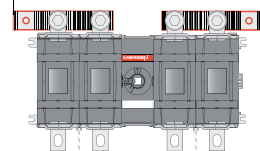


3-pole:



4-pole:

with shrouds 432 mm, 17.01 in
without shrouds 404 mm, 15.91 in



AMB205