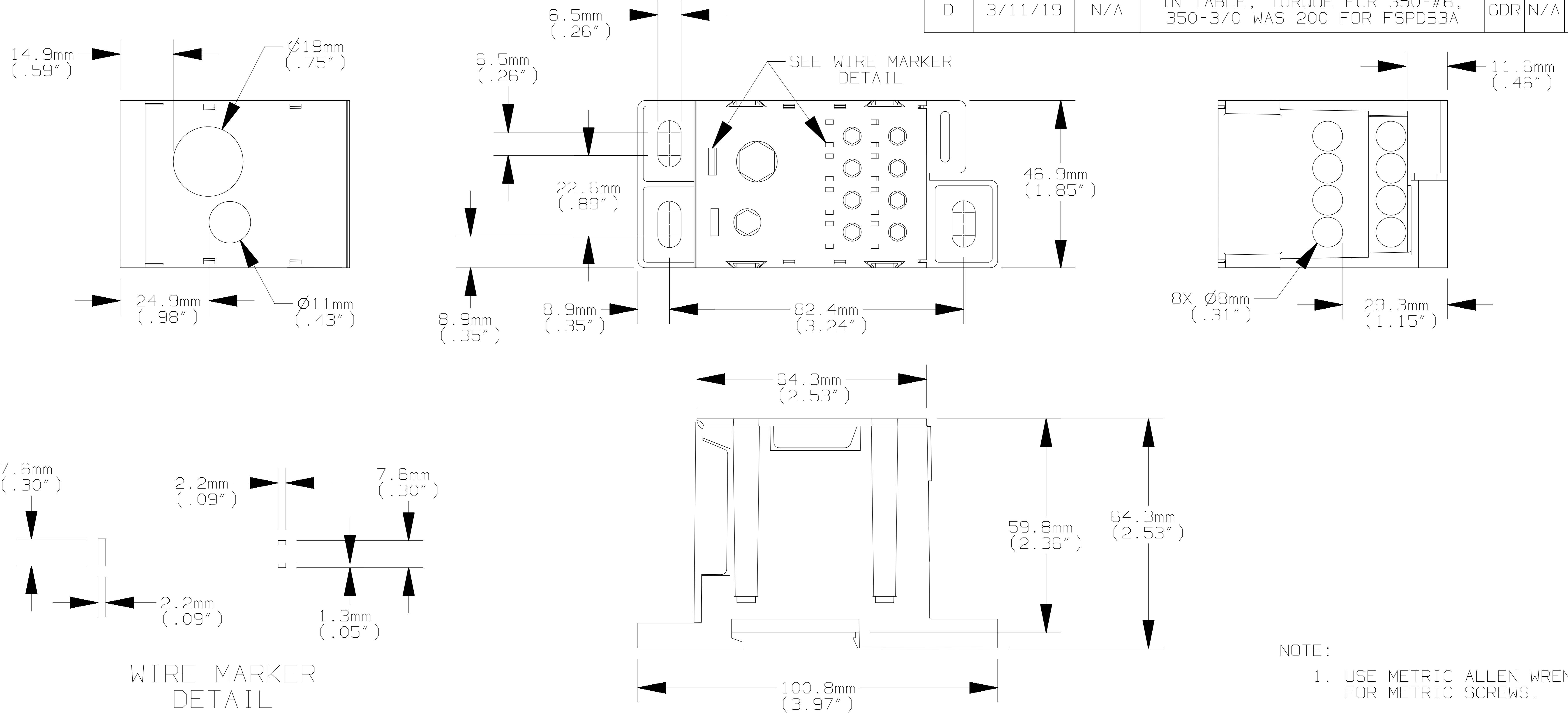


REV	DATE	ECO	DESCRIPTION	BY	CK	APP
D	3/11/19	N/A	IN TABLE, TORQUE FOR 350-#6, 350-3/0 WAS 200 FOR FSPDB3A	GDR	N/A	N/A



NOTE:  
1. USE METRIC ALLEN WRENCH FOR METRIC SCREWS.

P/N	CONN. MAT'L.	AMP RATING	LINE				LOAD				UL		CSA	
			RANGE AWG/kcmil	TORQUE in/lbs	RANGE mm <sup>2</sup>	TORQUE N-m	RANGE AWG/kcmil	TORQUE in/lbs	RANGE mm <sup>2</sup>	TORQUE N-m	FILE #	GUIDE #	FILE #	CLASS
FSPDB3A	AL	310	350-#6	350-3/0 300 2/0-#1 100 #2-#6 80	185-16	185-95 22.6 70-50 11.4 35-16 9	#2-#14	#2-#6 80 #8-#14 35	35-2.5	35-16 9 10-2.5 3.9	E73571	XCFR2	69363	6228
			2/0-#14	2/0-#1 100 #2-#6 80 #8-#14 35	70-2.5	70-50 11.4 35-16 9 10-2.5 3.9								
FSPDB3C	Cu	310	350-#6	350-3/0 200 2/0-#1 100 #2-#6 80	185-16	185-95 22.6 70-50 11.4 35-16 9	#8-#14	#8-#14 35	10-2.5	10-2.5 3.9	E73571	XCFR2	69363	6228
			2/0-#14	2/0-#1 100 #2-#6 80 #8-#14 35	70-2.5	70-50 11.4 35-16 9 10-2.5 3.9								



MERSEN USA NEWBURYPORT-MA, LLC  
374 MERRIMAC STREET  
NEWBURYPORT, MA 01950

FINGER-SAFE  
POWER DISTRIBUTION BLOCK  
600V

OUTLINE DIMENSIONS  
NOT TO BE USED FOR PRODUCTION

PRODUCT MANAGER  
SIGN: D. VANGARI  
DATE: 3/11/19

DESIGN ENGINEER  
SIGN: R. BURGE  
DATE: 3/11/19

(1)350-#6 + (1)2/0-#14 X (8)#8-#14  
(1)35-2.5 + (1)70-2.5 X (8)10-2.5

700902