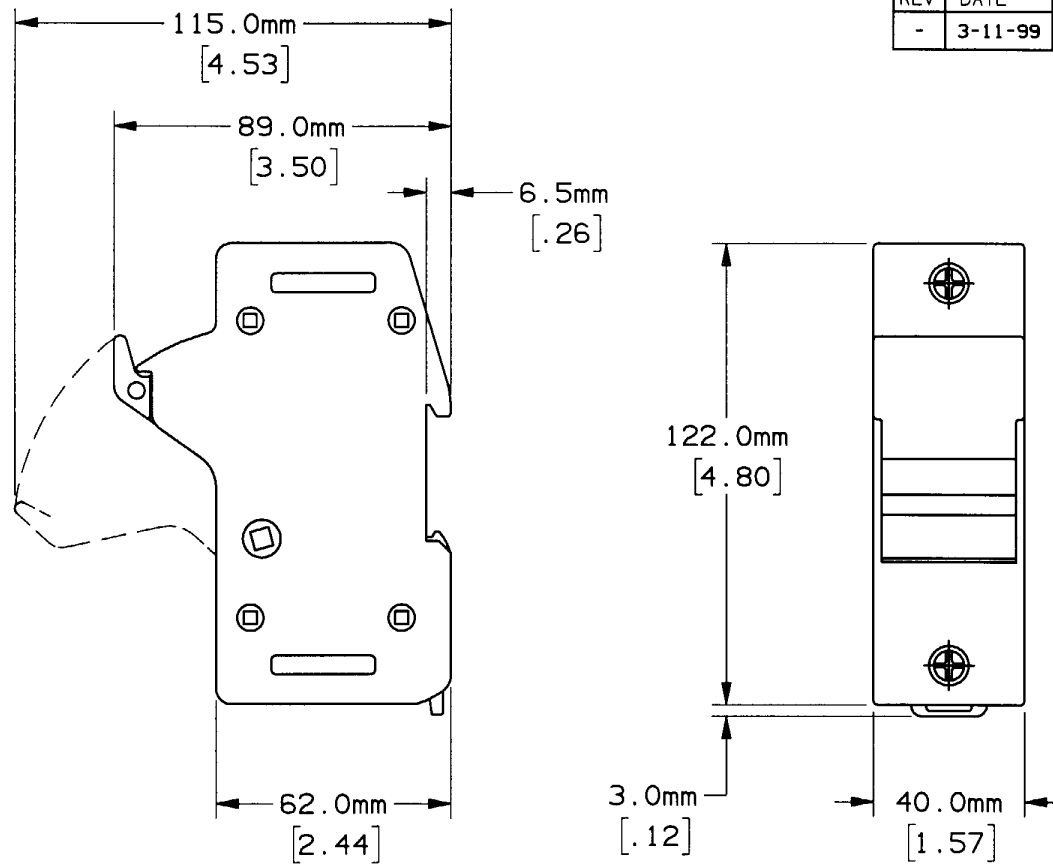


REV	DATE	ECO	DESCRIPTION	BY	CK	APP
-	3-11-99	N/A	INIT RELEASE	GCT	N/A	N/A



NOTES:

1. MATERIAL COMPOSITION AND RATING THERMOPLASTIC - 150°C RTI.
2. DIMENSIONS ARE mm/[INCHES].
3. TOLERANCES ARE ±.01 UNLESS OTHERWISE SPECIFIED.

P/N	CONN TYPE	RMS SYM RATING	TORQUE (IN-LBS)	WIRE			U/L		CSA
				WIRE RANGE	°C	TYPE	FILE NO.	GUIDE NO.	REPORT NO.
US6J1 US6J1I	PRESSURE PLATE	200K	45	#2-#14	75	CU	E52283	IZLT	LR32169



GOULD 374 MERRIMAC STREET
NEWBURYPORT, MA 01950

PRODUCT MANAGER

DESIGN ENGINEER

SIGN: *Michael DeLuca*
DATE: 4-5-99

SIGN: *Elizabeth Kegan*
DATE: 4-5-99

FUSE HOLDER, 600V-60A, 1 POLE
CLASS J

OUTLINE DIMENSIONS
NOT TO BE USED FOR PRODUCTION

700432